



4E-BP1(Ab-45)Antibody

Cat. #: ANTY021216

Species: Human, Mouse, Rat

Quantity: 100ug

Concentration: 100ug/100ul

Storage and Stability:

Store at -20°C/1 year

Immunogen:

The antiserum was produced against synthesized non-phosphopeptide derived from human 4E-BP1 around the phosphorylation site of threonine 45 (S-T-TP-P-G).

Specificity:

4E-BP1 (Ab-45) antibody detects endogenous levels of total 4E-BP1 protein. This antibody may cross-react with 4E-BP2 and 4E-BP3.

Tested Application: WB and IHC

Application Notes: Rabbit IgG in phosphate buffered saline (without Mg²⁺ and Ca²⁺), pH 7.4, 150mM NaCl, 0.02% sodium azide and 50% glycerol.

Raised In: Rabbit

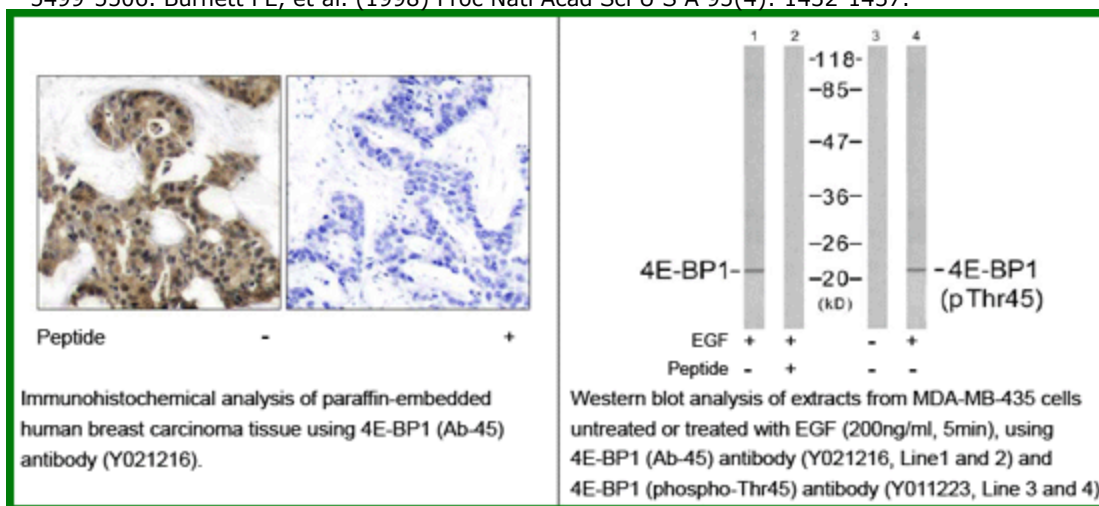
Purity: The antibody was affinity-purified from rabbit antiserum by affinity-chromatography using epitope-specific immunogen.

Storage buffer: WB: 1:500~1:1000 IHC: 1:50~1:100

Form: Liquid

Reference:

Gingras AC, et al. (1998) Genes Dev 12(4): 502-513. Brugarolas J, et al. (2004) Genes Dev 18(23): 2893-2904. Kumar V, et al. (2000) EMBO J 19(5): 1087-1097. Moody CA, et al. (2005) J Virol 79(9): 5499-5506. Burnett PE, et al. (1998) Proc Natl Acad Sci U S A 95(4): 1432-1437.



For research use only

Antagene, Inc. Toll Free: 1-866-964-2589, Fax: 1-888-225-1868, info@antageneinc.com,
www.antageneinc.com