



## EGFR (Ab-1172) Antibody

**Cat. #:** ANTY021213

**Species:** Human, Mouse, Rat

**Quantity:** 100ug

**Concentration:** 100ug/100ul

### Storage and Stability:

Store at -20°C/1 year

### Immunogen:

The antiserum was produced against synthesized non-phosphopeptide derived from human EGFR around the phosphorylation site of tyrosine 1172 (P-D-YP-Q-Q).

### Specificity:

EGFR (Ab-1172) antibody detects endogenous levels of total EGFR protein.

### Tested Application: WB

**Application Notes:** Rabbit IgG in phosphate buffered saline (without Mg<sup>2+</sup> and Ca<sup>2+</sup>), pH 7.4, 150mM NaCl, 0.02% sodium azide and 50% glycerol.

**Raised In:** Rabbit

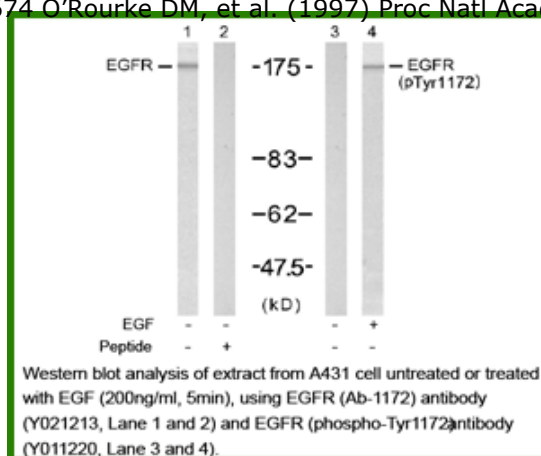
**Purity:** The antibody was affinity-purified from rabbit antiserum by affinity-chromatography using epitope-specific immunogen.

**Storage buffer:** WB: 1:500~1:1000

**Form:** Liquid

### Reference:

Noguchi T, et al. (1994) Mol Cell Biol; 14(10): 6674-6682 Doherty JK, et al. (1999) Proc Natl Acad Sci U S A; 96(19): 10869-10874 Kanner SB, et al. (1991) Mol Cell Biol; 11(2): 713-720 Wu TT, et al. (1998) Mol Biol Cell; 9(7): 1661-1674 O'Rourke DM, et al. (1997) Proc Natl Acad Sci U S A; 94(7): 3250-3255



**For research use only**

Antagene, Inc. Toll Free: 1-866-964-2589, Fax: 1-888-225-1868, [info@antageneinc.com](mailto:info@antageneinc.com),  
[www.antageneinc.com](http://www.antageneinc.com)