



β-Catenin (Ab-33) Antibody

Cat. #: ANTY021211

Species: Human, Mouse, Rat

Quantity: 100ug

Concentration: 100ug/100ul

Storage and Stability:

Store at -20°C/1 year

Immunogen:

The antiserum was produced against synthesized non-phosphopeptide derived from human β-Catenin around the phosphorylation site of serine 33 (L-D-SP-G-I).

Specificity:

β-Catenin (Ab-33) antibody detects endogenous levels of total β-Catenin protein.

Tested Application: Western Blot and IHC

Application Notes: Rabbit IgG in phosphate buffered saline (without Mg²⁺ and Ca²⁺), pH 7.4, 150mM NaCl, 0.02% sodium azide and 50% glycerol.

Raised In: Rabbit

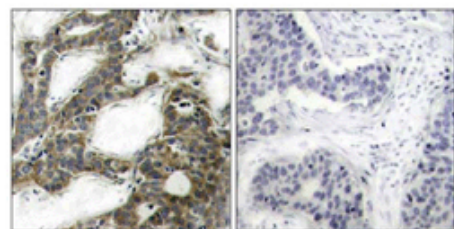
Purity: The antibody was affinity-purified from rabbit antiserum by affinity-chromatography using epitope-specific immunogen.

Storage buffer: WB: 1:500~1:1000 IHC: 1:50~1:100

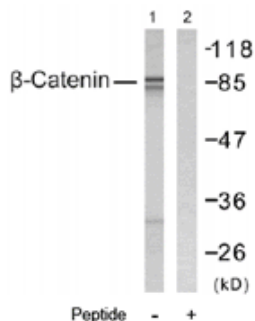
Form: Liquid

Reference:

Novak A, et al. (1998) Proc Natl Acad Sci U S A; 95(8): 4374-4379 Marin O, et al. (2003) Proc Natl Acad Sci U S A; 100(18): 10193-10200 Okamura H, et al. (2004) Mol Cell Biol; 24(10): 4184-4195 Xing Y, et al. (2003) Genes Dev; 17(22): 2753-2764 Barth AI, et al. (1999) Proc Natl Acad Sci U S A; 96(9): 4947-4952



Immunohistochemical analysis of paraffin-embedded human breast carcinoma tissue, using β-Catenin (Ab-33) antibody (Y021211).



Western blot analysis of extracts from SW 626 cells, using β-Catenin (Ab-33) antibody (Y021211).

For research use only

Antagene, Inc. Toll Free: 1-866-964-2589, Fax: 1-888-225-1868, info@antageneinc.com,
www.antageneinc.com