



## VASP (Ab-157) Antibody

**Cat. #:** ANTY021207

**Species:** Human, Mouse, Rat

**Quantity:** 100ug

**Concentration:** 100ug/100ul

**Storage and Stability:**

Store at -20°C/1 year

**Immunogen:**

The antiserum was produced against synthesized non-phosphopeptide derived from human VASP around the phosphorylation site of serine 157 (R-V-SP-N-A).

**Specificity:**

VASP (Ab-157) antibody detects endogenous levels of total VASP protein.

**Tested Application:** WB

**Application Notes:** Rabbit IgG in phosphate buffered saline (without Mg<sup>2+</sup> and Ca<sup>2+</sup>), pH 7.4, 150mM NaCl, 0.02% sodium azide and 50% glycerol.

**Raised In:** Rabbit

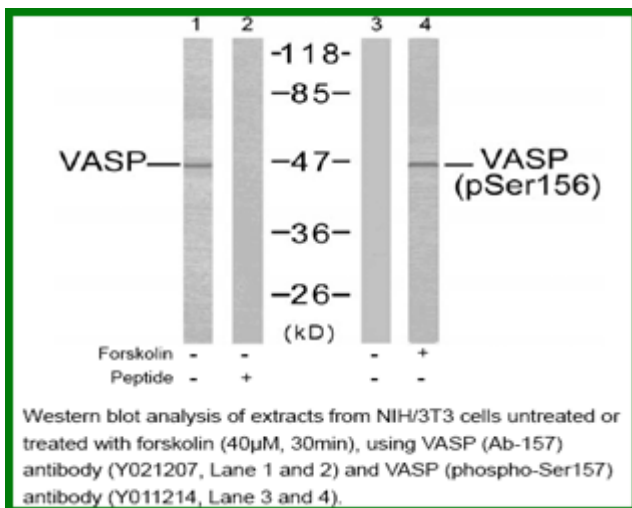
**Purity:** The antibody was affinity-purified from rabbit antiserum by affinity-chromatography using epitope-specific immunogen.

**Storage buffer:** WB: 1:500~1:1000

**Form:** Liquid

**Reference:**

Zhao WM, et al. (2001) EMBO J 20(9): 2315-2325. Millard TH, et al. (2005) EMBO J 24(2): 240-250. Kühnel K, et al. (2004) Proc Natl Acad Sci U S A 101(49): 17027-17032. Haffner C, et al. (1995) EMBO J 14(1): 19-27. Ramesh N, et al. (1997) Proc Natl Acad Sci U S A 94(26): 14671-14676.



**For research use only**

Antagene, Inc. Toll Free: 1-866-964-2589, Fax: 1-888-225-1868, [info@antageneinc.com](mailto:info@antageneinc.com),  
[www.antageneinc.com](http://www.antageneinc.com)