



MEK1 (Ab-217) Antibody

Cat. #: ANTY021203

Species: Human, Mouse, Rat

Quantity: 100ug

Concentration: 100ug/100ul

Storage and Stability:

Store at -20°C/1 year

Immunogen:

The antiserum was produced against synthesized non-phosphopeptide derived from human MEK1 around the phosphorylation site of serine 217 (I-D-SP-M-A).

Specificity:

MEK1 (Ab-217) antibody detects endogenous levels of total MEK1 protein.

Tested Application: WB and IHC

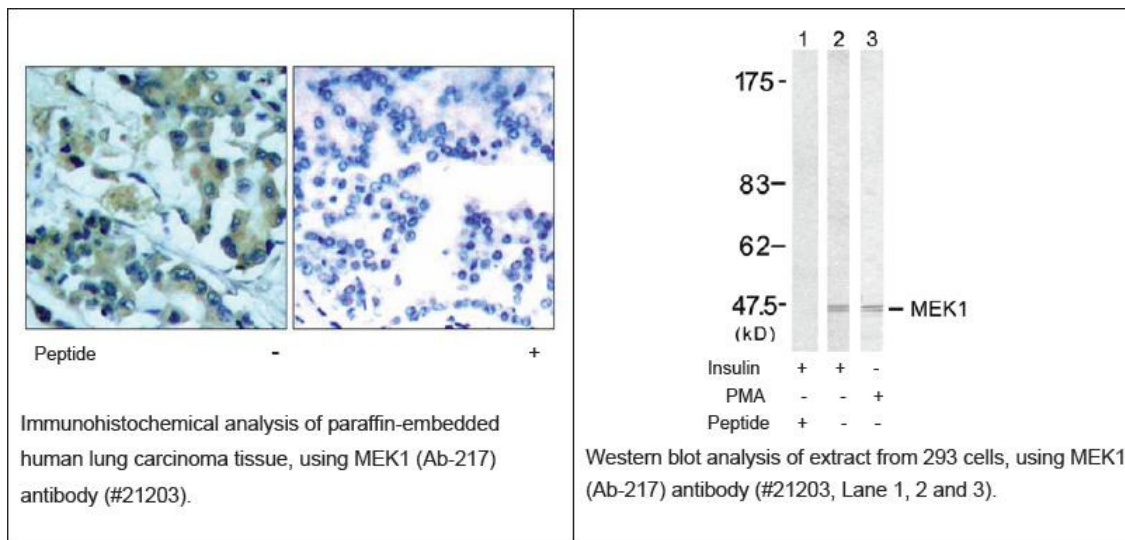
Application Notes: Rabbit IgG in phosphate buffered saline (without Mg²⁺ and Ca²⁺), pH 7.4, 150mM NaCl, 0.02% sodium azide and 50% glycerol.

Raised In: Rabbit

Purity: The antibody was affinity-purified from rabbit antiserum by affinity-chromatography using epitope-specific immunogen.

Storage buffer: WB: 1:500~1:1000; IHC: 1:50-1:100

Form: Liquid



For research use only

Antagene, Inc. Toll Free: 1-866-964-2589, Fax: 1-888-225-1868, info@antageneinc.com,
www.antageneinc.com