



## Ezrin (Ab-566) Antibody

**Cat. #:** ANTY021200

**Species:** Human, Mouse, Rat

**Quantity:** 100ug

**Concentration:** 100ug/100ul

**Storage and Stability:**

Store at -20°C/1 year

**Immunogen:**

The antiserum was produced against synthesized non-phosphopeptide derived from human Ezrin around the phosphorylation site of tyrosine 566 (Y-K-TP-L-R).

**Specificity:**

Ezrin (Ab-566) antibody detects endogenous levels of total Ezrin protein.

**Tested Application:** WB

**Application Notes:** Rabbit IgG in phosphate buffered saline (without Mg<sup>2+</sup> and Ca<sup>2+</sup>), pH 7.4, 150mM NaCl, 0.02% sodium azide and 50% glycerol.

**Raised In:** Rabbit

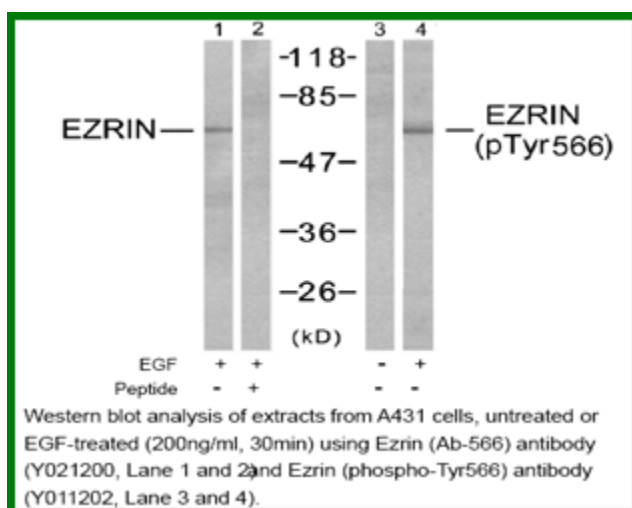
**Purity:** The antibody was affinity-purified from rabbit antiserum by affinity-chromatography using epitope-specific immunogen.

**Storage buffer:** WB: 1:500~1:1000

**Form:** Liquid

**Reference:**

Zhou R, et al. (2005) J Cell Sci: 118 (Pt 19): 4381-91. Shiue H, et al.(2005) J Biol Chem: 280(2): 1688-95. Zhao H, et al. (2004) Proc Natl Acad Sci U S A: 101(25): 9485-90. Fievet BT, et al. (2004) J Cell Biol: 164(5): 653-9.



**For research use only**

Antagene, Inc. Toll Free: 1-866-964-2589, Fax: 1-888-225-1868, [info@antageneinc.com](mailto:info@antageneinc.com),  
[www.antageneinc.com](http://www.antageneinc.com)