



MSK1 (Ab-376) Antibody

Cat. #: ANTY021198

Species: Human, Mouse and Rat

Quantity: 100ug

Concentration: 100ug/100ul

Storage and Stability:

Store at -20°C/1 year

Immunogen:

The antiserum was produced against synthesized non-phosphopeptide derived from human MSK1 around the phosphorylation site of serine 376 (G-Y-SP-F-V).

Specificity:

MSK1 (Ab-376) antibody detects endogenous levels of total MSK1 protein.

Tested Application: WB

Application Notes: Rabbit IgG in phosphate buffered saline (without Mg²⁺ and Ca²⁺), pH 7.4, 150mM NaCl, 0.02% sodium azide and 50% glycerol.

Raised In: Rabbit

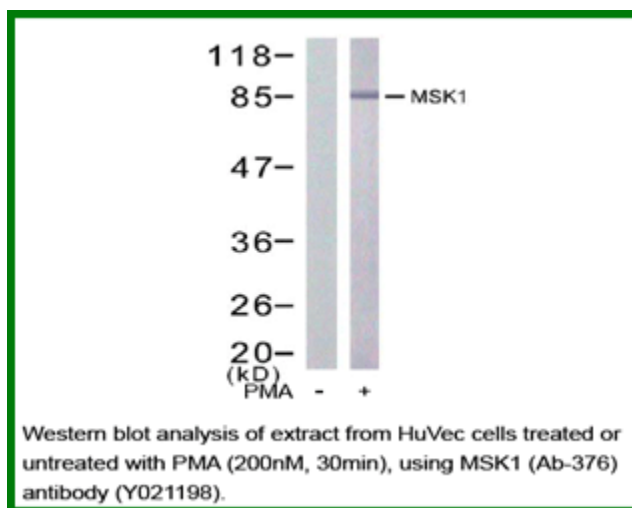
Purity: The antibody was affinity-purified from rabbit antiserum by affinity-chromatography using epitope-specific immunogen.

Storage buffer: WB: 1:500~1:1000

Form: Liquid

Reference:

Roux PP, et al. (2004) Microbiol Mol Biol Rev. Jun; 68(2): 320-344 McCoy C, et al. (2005) Biochem J. Apr 15; 387(Pt 2): 507-517



For research use only

Antagene, Inc. Toll Free: 1-866-964-2589, Fax: 1-888-225-1868, info@antageneinc.com,
www.antageneinc.com