



## Bcr (Ab-177) Antibody

**Cat. #:** ANTY021197

**Species:** Human and Mouse

**Quantity:** 100ug

**Concentration:** 100ug/100ul

**Storage and Stability:**

Store at -20°C/1 year

**Immunogen:**

The antiserum was produced against synthesized non-phosphopeptide derived from human Bcr around the phosphorylation site of tyrosine 177 (P-F-YP-V-N).

**Specificity:**

Bcr (Ab-177) antibody detects endogenous levels of total Bcr protein.

**Tested Application:** WB

**Application Notes:** Rabbit IgG in phosphate buffered saline (without Mg<sup>2+</sup> and Ca<sup>2+</sup>), pH 7.4, 150mM NaCl, 0.02% sodium azide and 50% glycerol.

**Raised In:** Rabbit

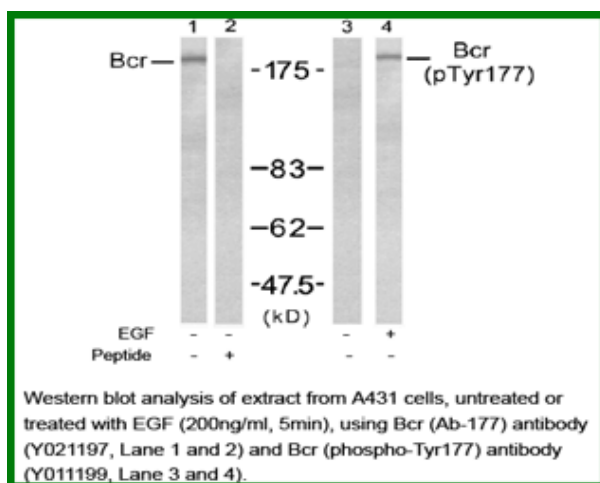
**Purity:** The antibody was affinity-purified from rabbit antiserum by affinity-chromatography using epitope-specific immunogen.

**Storage buffer:** WB: 1:500~1:1000

**Form:** Liquid

**Reference:**

Sattler M, et al. Mol Cell Biol. 1999 Nov; 19(11): 7473-7480. Li S et al. EMBO J. 2001 Dec 3; 20(23): 6793-6804. Million RP, et.al. Mol Cell Biol. 2004 Jun; 24(11): 4685-4695. Malcolm A. Meyn, et al. . Biol. Chem., Oct 2006; 281: 30907 – 30916.



**For research use only**

Antagene, Inc. Toll Free: 1-866-964-2589, Fax: 1-888-225-1868, [info@antageneinc.com](mailto:info@antageneinc.com),  
[www.antageneinc.com](http://www.antageneinc.com)