



Ephrin-B2 (Ab-330) Antibody

Cat. #: ANTY021196

Species: Human, Mouse and Rat

Quantity: 100ug

Concentration: 100ug/100ul

Storage and Stability:

Store at -20°C/1 year

Immunogen:

The antiserum was produced against synthesized non-phosphopeptide derived from human Ephrin-B2 around the phosphorylation site of tyrosine 330 (N-I-YP-Y-K).

Specificity:

Ephrin-B2 (Ab-330) antibody detects endogenous levels of total Ephrin-B2 protein.

Tested Application: WB

Application Notes: Rabbit IgG in phosphate buffered saline (without Mg²⁺ and Ca²⁺), pH 7.4, 150mM NaCl, 0.02% sodium azide and 50% glycerol.

Raised In: Rabbit

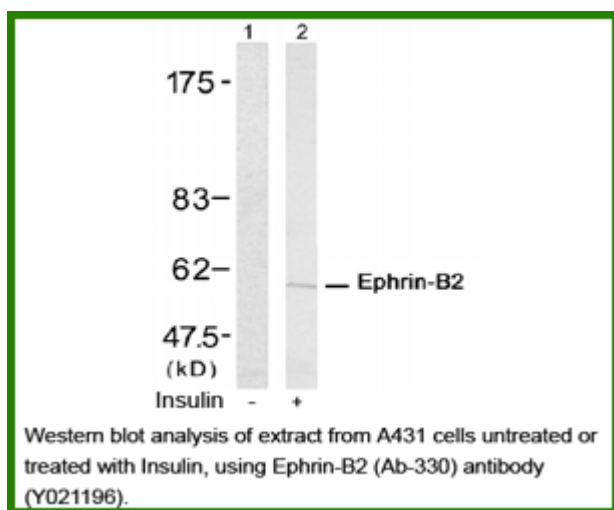
Purity: The antibody was affinity-purified from rabbit antiserum by affinity-chromatography using epitope-specific immunogen.

Storage buffer: WB: 1:500~1:1000

Form: Liquid

Reference:

Chrencik JE, et al. (2006) J Biol Chem; 281(38):28185-28192. Kertesz N, et al. (2006) Blood; 107(6):2330-2338. Noren NK, et al. (2004) Proc Natl Acad Sci USA; 101(15):5583-5588.



For research use only

Antagene, Inc. Toll Free: 1-866-964-2589, Fax: 1-888-225-1868, info@antageneinc.com,
www.antageneinc.com