



EGFR (Ab-678) Antibody

Cat. #: ANTY021193

Species: Human, Mouse and Rat

Quantity: 100ug

Concentration: 100ug/100ul

Storage and Stability:

Store at -20°C/1 year

Immunogen:

The antiserum was produced against synthesized non-phosphopeptide derived from human EGFR around the phosphorylation site of threonine 678 (K-R-TP-L-R).

Specificity:

EGFR (Ab-678) antibody detects endogenous levels of total EGFR protein.

Tested Application: WB

Application Notes: Rabbit IgG in phosphate buffered saline (without Mg²⁺ and Ca²⁺), pH 7.4, 150mM NaCl, 0.02% sodium azide and 50% glycerol.

Raised In: Rabbit

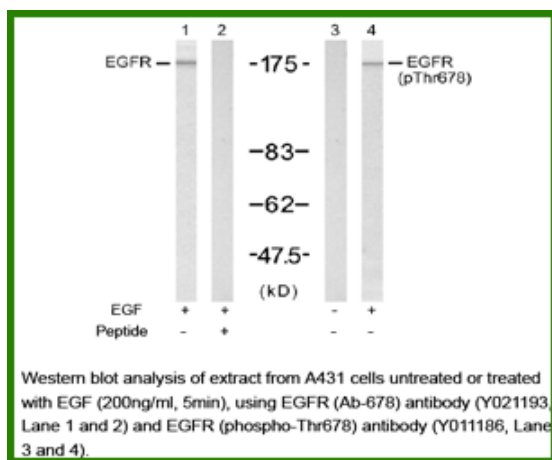
Purity: The antibody was affinity-purified from rabbit antiserum by affinity-chromatography using epitope-specific immunogen.

Storage buffer: WB: 1:500~1:1000

Form: Liquid

Reference:

Doherty JK, et al. (1999) Proc Natl Acad Sci U S A; 96(19): 10869-10874 Wu TT, et al. (1998) Mol Biol Cell; 9(7): 1661-1674 O'Rourke DM, et al. (1997) Proc Natl Acad Sci U S A; 94(7): 3250-3255 Noguchi T, et al. (1994) Mol Cell Biol; 14(10): 6674-6682 Kanner SB, et al. (1991) Mol Cell Biol; 11(2): 713-720



For research use only

Antagene, Inc. Toll Free: 1-866-964-2589, Fax: 1-888-225-1868, info@antageneinc.com,
www.antageneinc.com