



SMC1 (Ab-957) Antibody

Cat. #: ANTY021190

Species: Human, Mouse

Quantity: 100ug

Concentration: 100ug/100ul

Storage and Stability:

Store at -20°C/1 year

Immunogen:

The antiserum was produced against synthesized non-phosphopeptide derived from human SMC1 around the phosphorylation site of serine 957 (G-S-SP-Q-G).

Specificity:

SMC1 (Ab-957) antibody detects endogenous levels of total SMC1 protein.

Tested Application: IHC

Application Notes: Rabbit IgG in phosphate buffered saline (without Mg²⁺ and Ca²⁺), pH 7.4, 150mM NaCl, 0.02% sodium azide and 50% glycerol.

Raised In: Rabbit

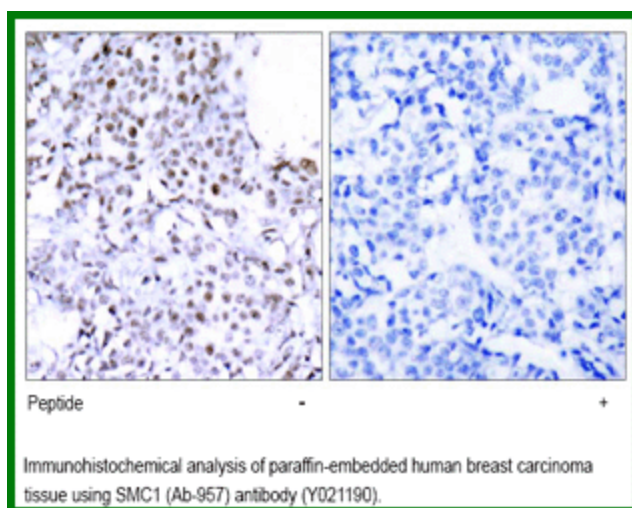
Purity: The antibody was affinity-purified from rabbit antiserum by affinity-chromatography using epitope-specific immunogen.

Storage buffer: IHC: 1:50~1:100

Form: Liquid

Reference:

Yang XM. et al. (2004) Mol Cell Biol. 24(12): 5290-5303. Kim ST. et al. (2002) Genes Dev. 16(5): 560-570. Revenkova E. et al. (2001) Mol Cell Biol. 21(20): 6984-6998.



For research use only

Antagene, Inc. Toll Free: 1-866-964-2589, Fax: 1-888-225-1868, info@antageneinc.com,
www.antageneinc.com