



14-3-3 ζ (Ab-58) Antibody

Cat. #: ANTY021188

Species: Human, Mouse, Rat

Quantity: 100ug

Concentration: 100ug/100ul

Storage and Stability:

Store at -20°C/1 year

Immunogen:

The antiserum was produced against synthesized non-phosphopeptide derived from human 14-3-3 ζ around the phosphorylation site of serine 58 (R-S-SP-W-R).

Specificity:

14-3-3 ζ (Ab-58) antibody detects endogenous levels of total 14-3-3 ζ protein.

Tested Application: WB and IHC

Application Notes: Rabbit IgG in phosphate buffered saline (without Mg²⁺ and Ca²⁺), pH 7.4, 150mM NaCl, 0.02% sodium azide and 50% glycerol.

Raised In: Rabbit

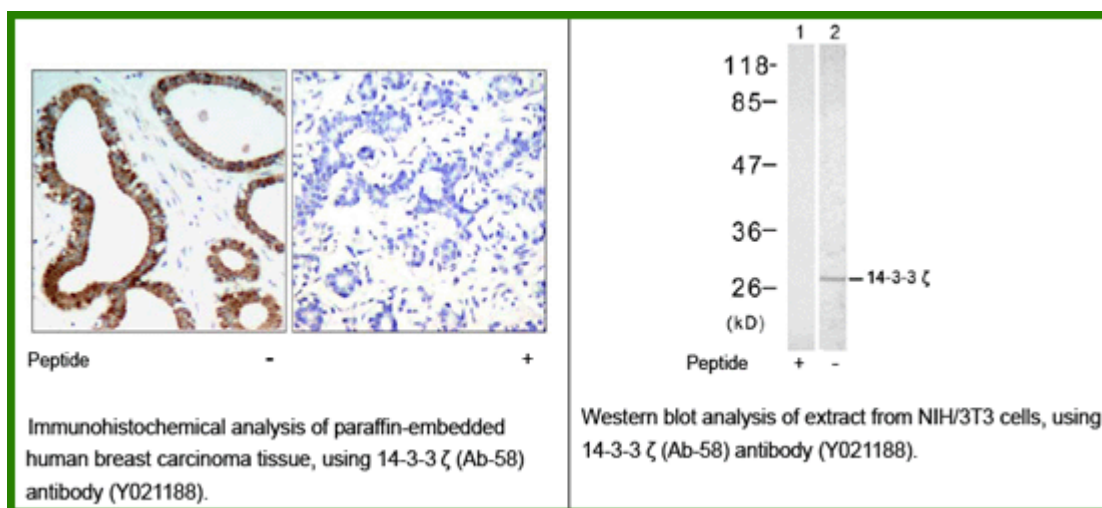
Purity: The antibody was affinity-purified from rabbit antiserum by affinity-chromatography using epitope-specific immunogen.

Storage buffer: WB: 1:500~1:1000 IHC: 1:50-1:100

Form: Liquid

Reference:

Gu YM, et al. (2006) FEBS Lett ; 580(1): 305-310 Powell DW, et al. (2003) Mol Cell Biol; 23(15): 5376-5387 Mackintosh C. (2004) Biochem J; 381(Pt 2): 329-342.



For research use only

Antagene, Inc. Toll Free: 1-866-964-2589, Fax: 1-888-225-1868, info@antageneinc.com,
www.antageneinc.com