



PLC γ 2 (Ab-753) Antibody

Cat. #: ANTY021186

Species: Human, Mouse, Rat

Quantity: 100ug

Concentration: 100ug/100ul

Storage and Stability:

Store at -20°C/1 year

Immunogen:

The antiserum was produced against synthesized non-phosphopeptide derived from human PLC γ 2 around the phosphorylation site of tyrosine 753 (S-L-YP-D-V).

Specificity:

PLC γ 2 (Ab-753) antibody detects endogenous levels of total PLC γ 2 protein.

Tested Application: WB

Application Notes: Rabbit IgG in phosphate buffered saline (without Mg²⁺ and Ca²⁺), pH 7.4, 150mM NaCl, 0.02% sodium azide and 50% glycerol.

Raised In: Rabbit

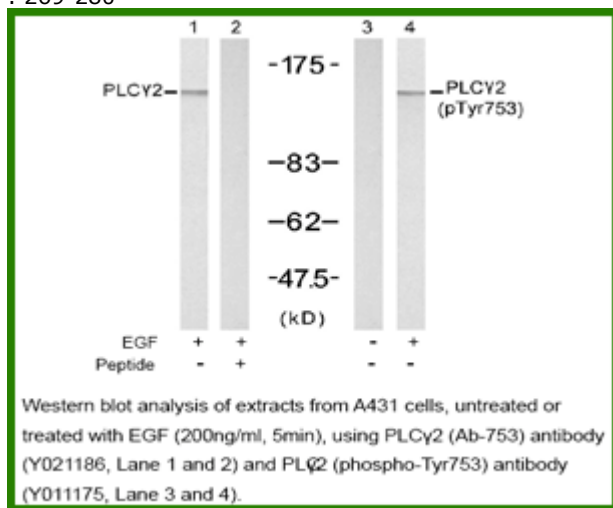
Purity: The antibody was affinity-purified from rabbit antiserum by affinity-chromatography using epitope-specific immunogen.

Storage buffer: WB: 1:500~1:1000

Form: Liquid

Reference:

Kim YJ, et al. (2004) Mol Cell Biol 24: 9986-9999 Humphries LA, et al. (2004) J Biol Chem 279 : 37651-37661 Suzuki-Inoue K, et al. (2004) Biochem J 378 : 1023-1029 Rodriguez R, et al. (2003) Biochem J 374 : 269-280



For research use only

Antagene, Inc. Toll Free: 1-866-964-2589, Fax: 1-888-225-1868, info@antageneinc.com,
www.antageneinc.com