



PKC β (Ab-641) Antibody

Cat. #: ANTY021184

Species: Human, Mouse, Rat

Quantity: 100ug

Concentration: 100ug/100ul

Storage and Stability:

Store at -20°C/1 year

Immunogen:

The antiserum was produced against synthesized non-phosphopeptide derived from human PKC β around the phosphorylation site of threonine 641 (E-L-TP-P-T).

Specificity:

PKC β (Ab-641) antibody detects endogenous levels of total PKC β protein.

Tested Application: WB and IHC

Application Notes: Rabbit IgG in phosphate buffered saline (without Mg²⁺ and Ca²⁺), pH 7.4, 150mM NaCl, 0.02% sodium azide and 50% glycerol.

Raised In: Rabbit

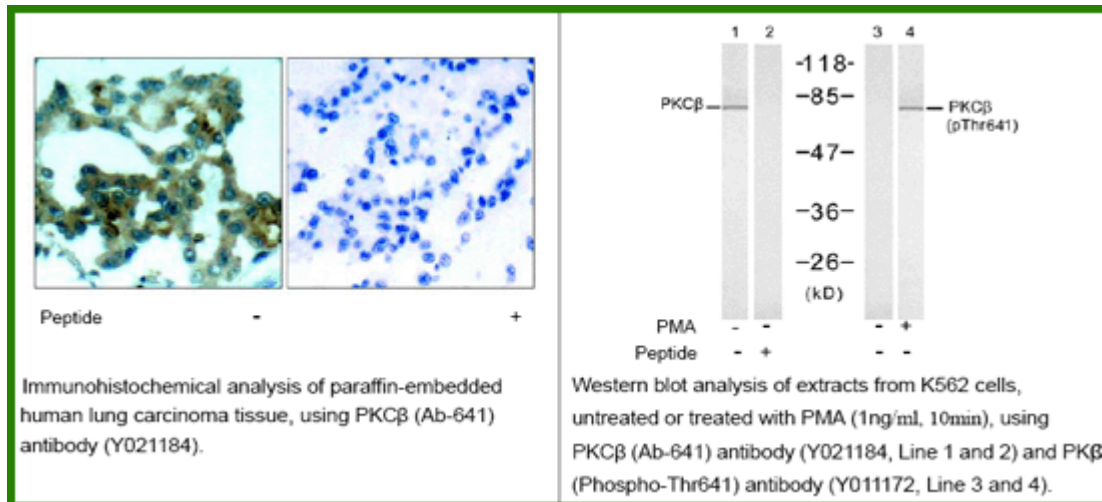
Purity: The antibody was affinity-purified from rabbit antiserum by affinity-chromatography using epitope-specific immunogen.

Storage buffer: WB: 1:500~1:1000 IHC: 1:50-1:100

Form: Liquid

Reference:

Zhang Y, et al. (2006) Mol Cell Biol ; 26: 6748-6761 Castoria G, et al. (2004) Mol Cell Biol ; 24: 7643-7653 Marcil J, et al. (1999) Biochem J ; 337:185-192 Bornancin F, et al. (1996) Curr Biol ; 6:1114-1123.



For research use only

Antagene, Inc. Toll Free: 1-866-964-2589, Fax: 1-888-225-1868, info@antageneinc.com, www.antageneinc.com