



IκB-α (Ab-42) Antibody

Cat. #: ANTY021176

Species: Human, Mouse and Rat

Quantity: 100ug

Concentration: 100ug/100ul

Storage and Stability:

Store at -20°C/1 year

Immunogen:

The antiserum was produced against synthesized non-phosphopeptide derived from human IκB-α around the phosphorylation site of tyrosine 42 (E-E-YP-E-Q).

Specificity:

IκB-α (Ab-42) antibody detects endogenous levels of total IκB-α protein.

Tested Application: WB and IHC

Application Notes: Rabbit IgG in phosphate buffered saline (without Mg²⁺ and Ca²⁺), pH 7.4, 150mM NaCl, 0.02% sodium azide and 50% glycerol.

Raised In: Rabbit

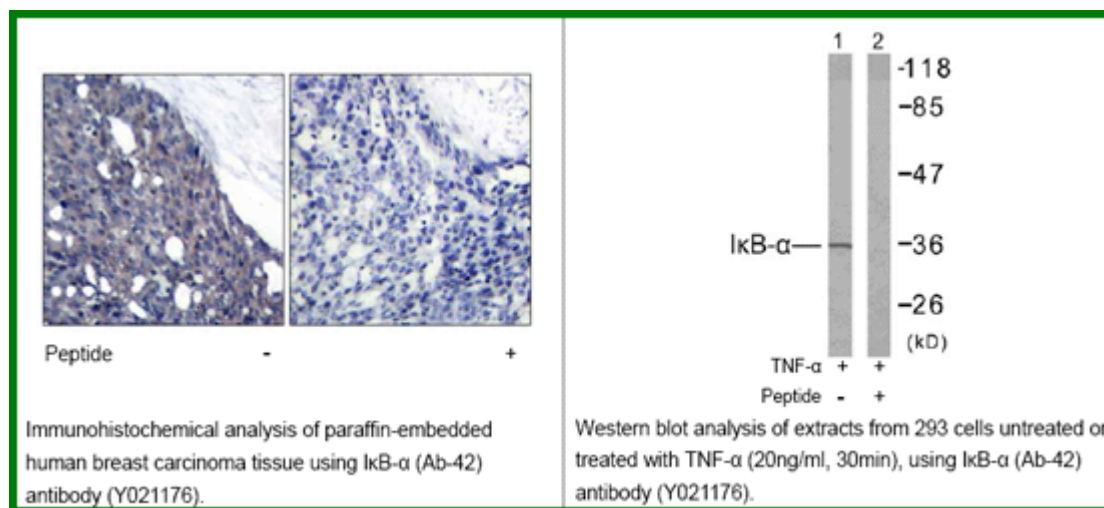
Purity: The antibody was affinity-purified from rabbit antiserum by affinity-chromatography using epitope-specific immunogen.

Storage buffer: WB: 1:500~1:1000 IHC: 1:50~1:100

Form: Liquid

Reference:

Béraud C, et al. (1999) Proc Natl Acad Sci U S A 96(2): 429-434. Sundström S, et al. (2005) J Virol 79(4): 2230-2239. Liu L, et al. (1998) Mol Cell Biol 18(7): 4221-4234. Shrivastava A, et al. (1998) J Virol 72(12): 9722-9728. Franzoso G, et al. (1997) Genes Dev 11(24): 3482-3496.



For research use only

Antagene, Inc. Toll Free: 1-866-964-2589, Fax: 1-888-225-1868, info@antageneinc.com,
www.antageneinc.com