



## MEK1 (Ab-221) Antibody

**Cat. #:** ANTY021175

**Species:** Human, Mouse and Rat

**Quantity:** 100ug

**Concentration:** 100ug/100ul

**Storage and Stability:**

Store at -20°C/1 year

**Immunogen:**

The antiserum was produced against synthesized non-phosphopeptide derived from human MEK1 around the phosphorylation site of serine 221 (A-N-SP-F-V).

**Specificity:**

MEK1 (Ab-221) antibody detects endogenous levels of total MEK1 protein.

**Tested Application:** WB and IHC

**Application Notes:** Rabbit IgG in phosphate buffered saline (without Mg<sup>2+</sup> and Ca<sup>2+</sup>), pH 7.4, 150mM NaCl, 0.02% sodium azide and 50% glycerol.

**Raised In:** Rabbit

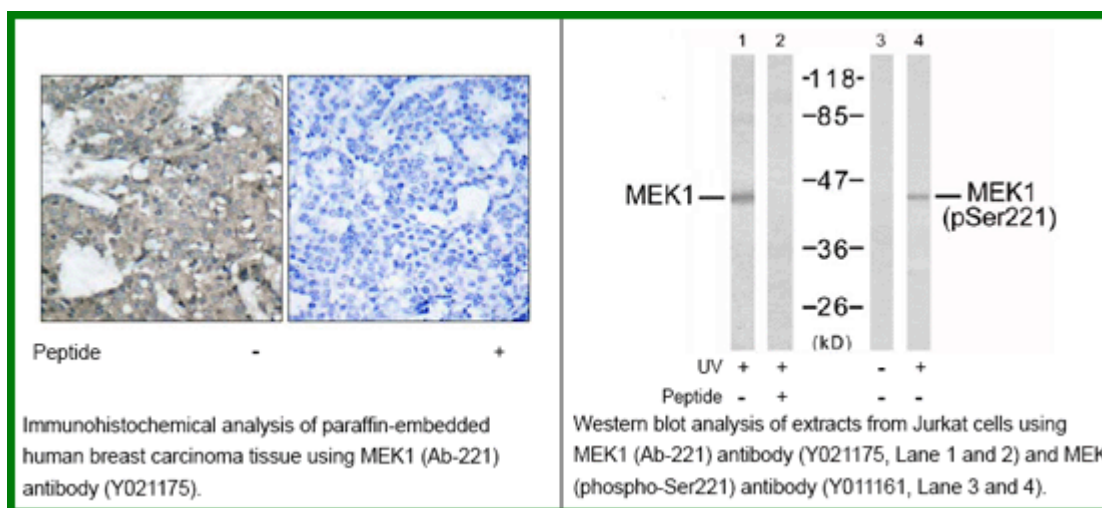
**Purity:** The antibody was affinity-purified from rabbit antiserum by affinity-chromatography using epitope-specific immunogen.

**Storage buffer:** WB: 1:500~1:1000 IHC: 1:50~1:100

**Form:** Liquid

**Reference:**

Zebisch A, et al. (2006) Cancer Res; 66(7): 3401-8. Luciano BS, et al. (2006) J Biol Chem; 279(50): 52117-23. Wang X, et al. (2003) Oncogene; 22(1): 109-16. Gopalbhai K, et al. (2003) J Biol Chem; 278(10): 8118-25. Ling MT, et al. (2002) Oncogene; 21(55): 8498-505.



**For research use only**

Antagene, Inc. Toll Free: 1-866-964-2589, Fax: 1-888-225-1868, [info@antageneinc.com](mailto:info@antageneinc.com),  
[www.antageneinc.com](http://www.antageneinc.com)