



FKHRL1 (Ab-253) Antibody

Cat. #: ANTY021171

Species: Human, Mouse and Rat

Quantity: 100ug

Concentration: 100ug/100ul

Storage and Stability:

Store at -20°C/1 year

Immunogen:

The antiserum was produced against synthesized non-phosphopeptide derived from human FKHR1 around the phosphorylation site of serine 253.

Specificity:

FKHRL1 (Ab-253) antibody detects endogenous levels of total FKHR1 protein.

Tested Application: WB, IHC

Application Notes: Rabbit IgG in phosphate buffered saline (without Mg²⁺ and Ca²⁺), pH 7.4, 150mM NaCl, 0.02% sodium azide and 50% glycerol.

Raised In: Rabbit

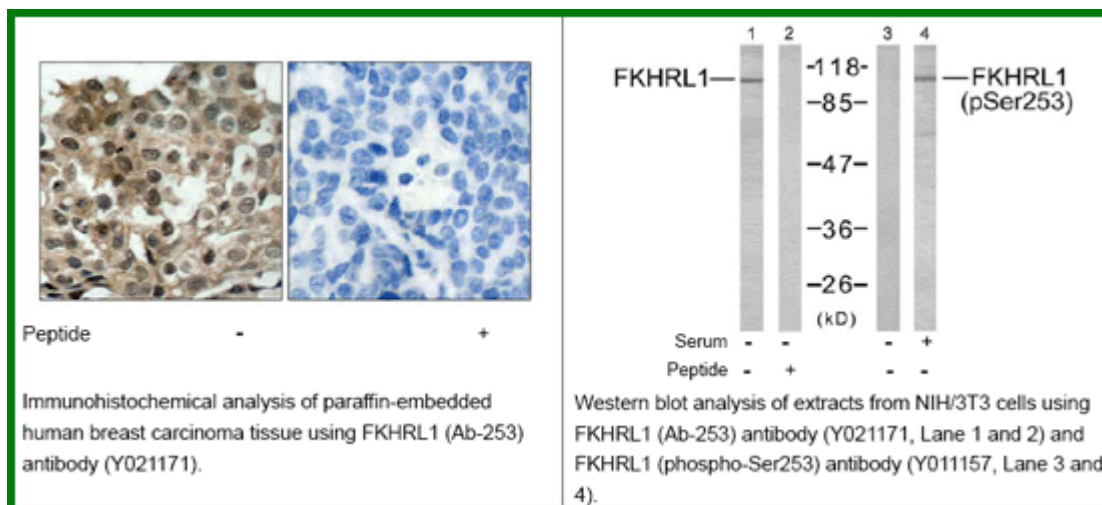
Purity: The antibody was affinity-purified from rabbit antiserum by affinity-chromatography using epitope-specific immunogen.

Storage buffer: WB: 1:500~1:1000 IHC: 1:50~1:100

Form: Liquid

Reference:

Smith WW, et al. (2005) J Cell Biol; 169(2): 331-9. Essafi A, et al. (2005) Oncogene; 24(14): 2317-29. Brunet A, et al. (2001) Mol Cell Biol; 21(3): 952-65. Brunet A, et al. (1999) Cell; 96(6): 857-68.



For research use only

Antagene, Inc. Toll Free: 1-866-964-2589, Fax: 1-888-225-1868, info@antageneinc.com,
www.antageneinc.com