



PAK1/PAK2/PAK3 (Ab-423/402/421) Antibody

Cat. #: ANTY021169

Species: Human, Mouse and Rat

Quantity: 100ug

Concentration: 100ug/100ul

Storage and Stability:

Store at -20°C/1 year

Immunogen:

The antiserum was produced against synthesized non-phosphopeptide derived from human PAK1 around the phosphorylation site of threonine 423 (R-S-TP-M-V).

Specificity:

PAK1/PAK2/PAK3 (Ab-423/402/421) antibody detects endogenous levels of total PAK1/PAK2/PAK3 protein.

Tested Application: IHC

Application Notes: Rabbit IgG in phosphate buffered saline (without Mg²⁺ and Ca²⁺), pH 7.4, 150mM NaCl, 0.02% sodium azide and 50% glycerol.

Raised In: Rabbit

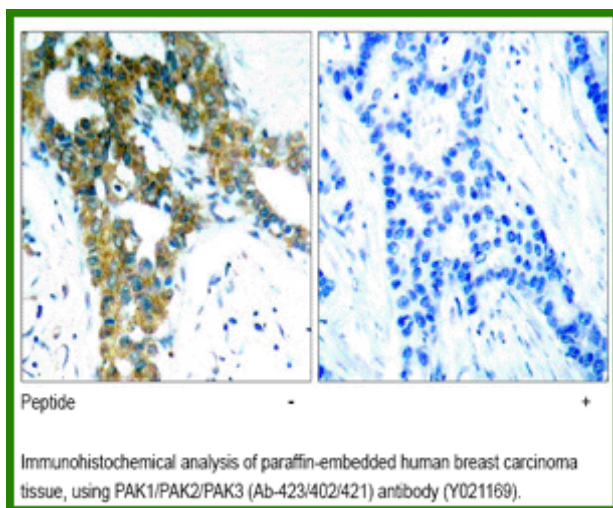
Purity: The antibody was affinity-purified from rabbit antiserum by affinity-chromatography using epitope-specific immunogen.

Storage buffer: IHC: 1:50-1:100

Form: Liquid

Reference:

Parsons M, et al. (2005) Mol Cell Biol ; 25:1680-1695. Jung JH, et al. (2005) J Biol Chem; 280:40025-40031. Lampugnani MG, et al. (2002) Mol Biol Cell ; 13: 1175-1189 Wang RA, et al. (2002) EMBO J; 21: 5437 - 5447.



For research use only

Antagene, Inc. Toll Free: 1-866-964-2589, Fax: 1-888-225-1868, info@antageneinc.com,
www.antageneinc.com