



Cofilin (Ab-3) Antibody

Cat. #: ANTY021164

Species: Human, Mouse and Rat

Quantity: 100ug

Concentration: 100ug/100ul

Storage and Stability:

Store at -20°C/1 year

Immunogen:

The antiserum was produced against synthesized non-phosphopeptide derived from human cofilin around the phosphorylation site of serine 3.

Specificity:

cofilin (Ab-1022) antibody detects endogenous levels of total cofilin protein.

Tested Application: WB and IHC

Application Notes: Rabbit IgG in phosphate buffered saline (without Mg²⁺ and Ca²⁺), pH 7.4, 150mM NaCl, 0.02% sodium azide and 50% glycerol.

Raised In: Rabbit

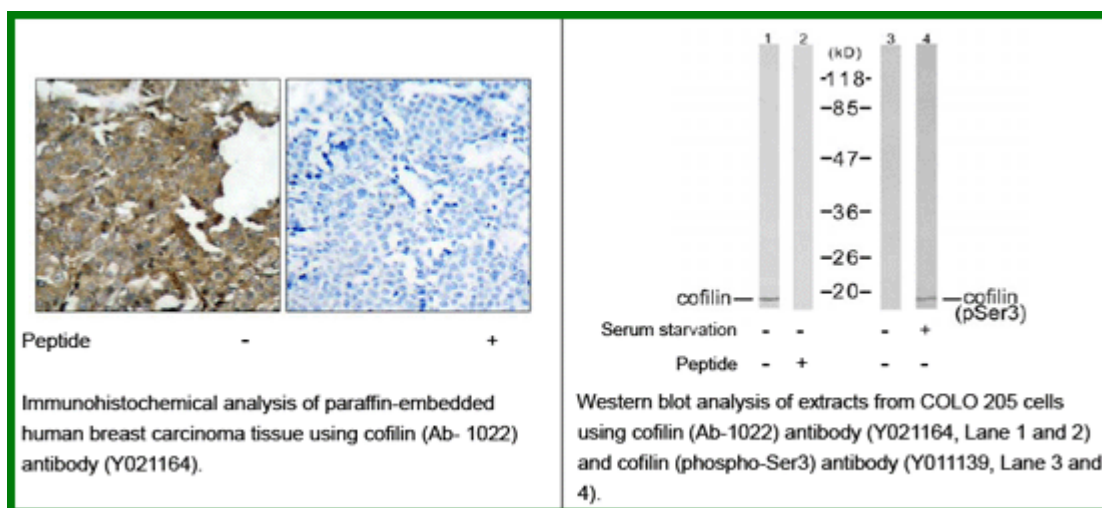
Purity: The antibody was affinity-purified from rabbit antiserum by affinity-chromatography using epitope-specific immunogen.

Storage buffer: WB: 1:500~1:1000 IHC: 1:50~1:100

Form: Liquid

Reference:

Kobayashi M, et al. (2006) EMBO J 25(4): 713-26. Wang Y, et al. (2005) Biol Chem 280(13): 12683-9. Smith-Beckerman DM, et al. (2005) Mol Cell Proteomics: 156-68.



For research use only

Antagene, Inc. Toll Free: 1-866-964-2589, Fax: 1-888-225-1868, info@antageneinc.com,
www.antageneinc.com