



Myosin Light Chain 2 (Ab-18) Antibody

Cat. #: ANTY021157

Species: Human, Mouse and Rat

Quantity: 100ug

Concentration: 100ug/100ul

Storage and Stability:

Store at -20°C/1 year

Immunogen:

The antiserum was produced against synthesized non-phosphopeptide derived from mouse Myosin Light Chain 2 around the phosphorylation site of serine 18 (A-T-SP-N-V).

Specificity:

Myosin Light Chain 2 (Ab-18) antibody detects endogenous levels of total Myosin Light Chain 2 protein.

Tested Application: WB

Application Notes: Rabbit IgG in phosphate buffered saline (without Mg²⁺ and Ca²⁺), pH 7.4, 150mM NaCl, 0.02% sodium azide and 50% glycerol.

Raised In: Rabbit

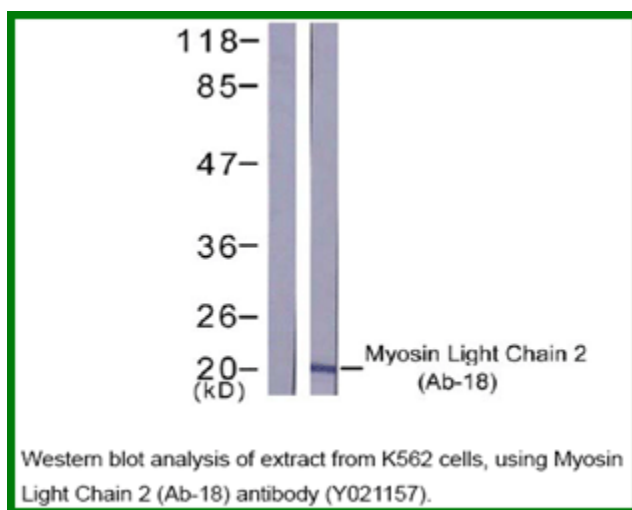
Purity: The antibody was affinity-purified from rabbit antiserum by affinity-chromatography using epitope-specific immunogen.

Storage buffer: WB: 1:500~1:1000

Form: Liquid

Reference:

Janiak A, et al. (2006) Mol Biol Cell. Apr; 17(4): 1606-1619. Croft DR, et al. (2006) Mol Cell Biol. 2 Jun; 26(12): 4612-4627 Li Z, et al. (2006) Mol Cell Biol. Jun; 26(11): 4240-4256



For research use only

Antagene, Inc. Toll Free: 1-866-964-2589, Fax: 1-888-225-1868, info@antageneinc.com,
www.antageneinc.com