



## LIMK2 (Ab-505) Antibody

**Cat. #:** ANTY021154

**Species:** Human, Mouse and Rat

**Quantity:** 100ug

**Concentration:** 100ug/100ul

**Storage and Stability:**

Store at -20°C/1 year

**Immunogen:**

The antiserum was produced against synthesized non-phosphopeptide derived from human LIMK2 around the phosphorylation site of threonine 505 (R-Y-TP-V-V).

**Specificity:**

LIMK2 (Ab-505) Antibody detects endogenous levels of total LIMK2 protein.

**Tested Application:** WB

**Application Notes:** Rabbit IgG in phosphate buffered saline (without Mg<sup>2+</sup> and Ca<sup>2+</sup>), pH 7.4, 150mM NaCl, 0.02% sodium azide and 50% glycerol.

**Raised In:** Rabbit

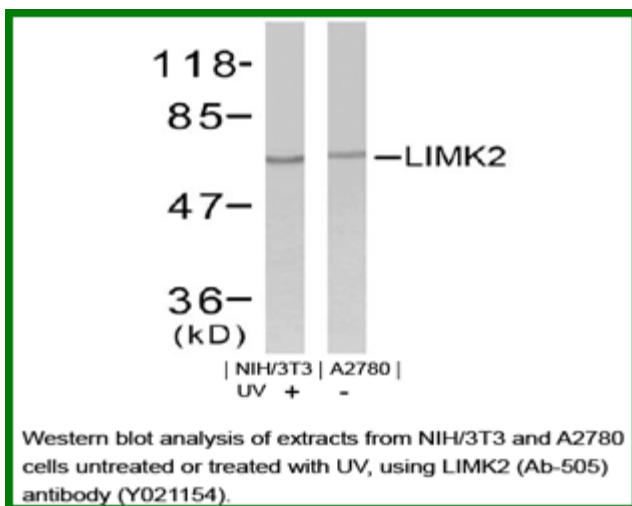
**Purity:** The antibody was affinity-purified from rabbit antiserum by affinity-chromatography using epitope-specific immunogen.

**Storage buffer:** WB: 1:500~1:1000

**Form:** Liquid

**Reference:**

Soosairajah J, et al. (2005) EMBO J. Ohashi K, et al. (2000) J Biol Chem; 275(5): 3577-82. Edwards DC, et al. (1999) Nat Cell Biol; 1(5): 253-9.



**For research use only**

Antagene, Inc. Toll Free: 1-866-964-2589, Fax: 1-888-225-1868, [info@antageneinc.com](mailto:info@antageneinc.com),  
[www.antageneinc.com](http://www.antageneinc.com)