



## MKK6 (Ab-207) Antibody

**Cat. #:** ANTY021153

**Species:** Human and Rat

**Quantity:** 100ug

**Concentration:** 100ug/100ul

**Storage and Stability:**

Store at -20°C/1 year

**Immunogen:**

The antiserum was produced against synthesized non-phosphopeptide derived from human MKK6 around the phosphorylation site of serine 207 (V-D-SP-V-A).

**Specificity:**

MKK6 (Ab-207) antibody detects endogenous levels of total MKK6 protein.

**Tested Application:** WB and IHC

**Application Notes:** Rabbit IgG in phosphate buffered saline (without Mg<sup>2+</sup> and Ca<sup>2+</sup>), pH 7.4, 150mM NaCl, 0.02% sodium azide and 50% glycerol.

**Raised In:** Rabbit

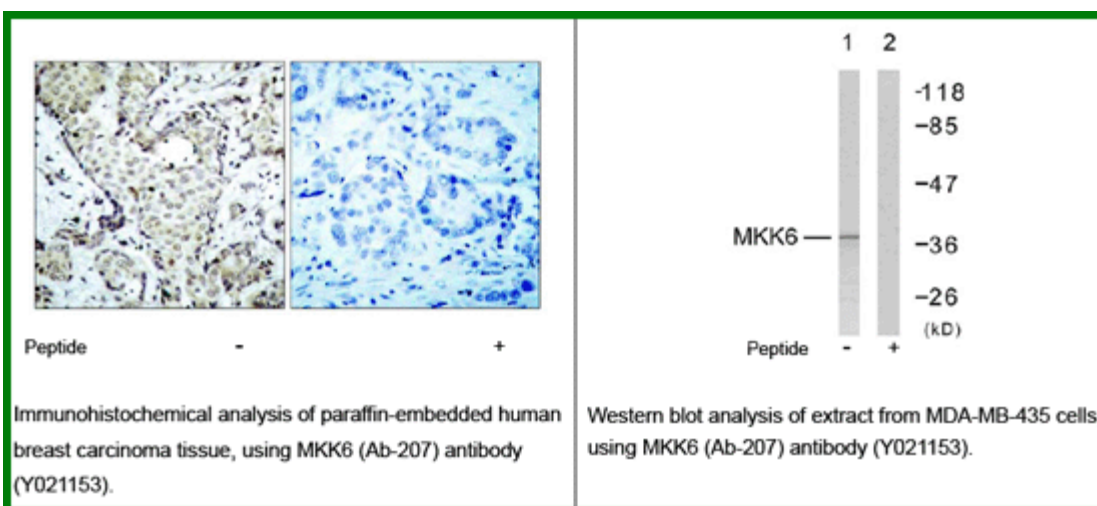
**Purity:** The antibody was affinity-purified from rabbit antiserum by affinity-chromatography using epitope-specific immunogen.

**Storage buffer:** WB: 1:500~1:1000 IHC: 1:50~1:100

**Form:** Liquid

**Reference:**

Wang W, et al. (2002) Mol Cell Biol ; 22(10): 3389-403. Raingeaud J, et al. (1996) Mol Cell Biol; 16(3): 1247-55.



**For research use only**

Antagene, Inc. Toll Free: 1-866-964-2589, Fax: 1-888-225-1868, [info@antageneinc.com](mailto:info@antageneinc.com),  
[www.antageneinc.com](http://www.antageneinc.com)