



## **CDC2 (Ab-161) Antibody**

**Cat. #:** ANTY021152

**Species:** Human, Mouse and Rat

**Quantity:** 100ug

**Concentration:** 100ug/100ul

**Storage and Stability:**

Store at -20°C/1 year

**Immunogen:**

The antiserum was produced against synthesized non-phosphopeptide derived from human CDC2 around the phosphorylation site of threonine161 (T-Y-TP-H-E).

**Specificity:**

CDC2 (Ab-161) antibody detects endogenous levels of total CDC2 protein.

**Tested Application:** WB

**Application Notes:** Rabbit IgG in phosphate buffered saline (without Mg<sup>2+</sup> and Ca<sup>2+</sup>), pH 7.4, 150mM NaCl, 0.02% sodium azide and 50% glycerol.

**Raised In:** Rabbit

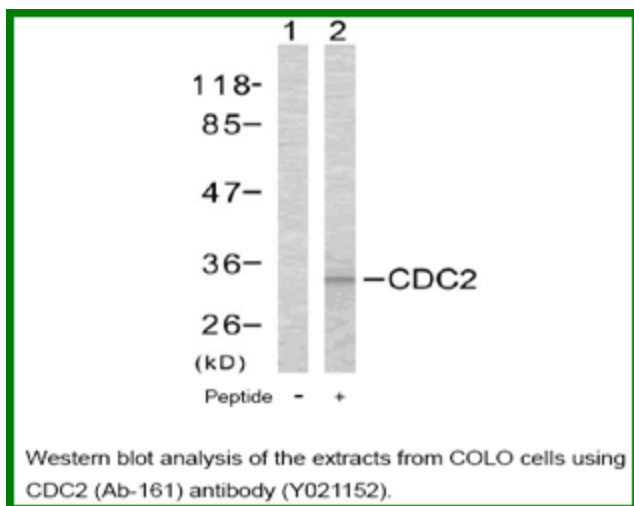
**Purity:** The antibody was affinity-purified from rabbit antiserum by affinity-chromatography using epitope-specific immunogen.

**Storage buffer:** WB: 1:500~1:1000

**Form:** Liquid

**Reference:**

Ukomadu C, et al.(2003) J Biol Chem; 278(7): 4840-6 Morris MC, et al.(2002)J Biol Chem; 277(26): 23847-53 Brown NR, et al.(1999)J Biol Chem; 274(13): 8746-56 Liu Y, et al.(2004) J Biol Chem; 279(6): 4507-14



**For research use only**

Antagene, Inc. Toll Free: 1-866-964-2589, Fax: 1-888-225-1868, [info@antageneinc.com](mailto:info@antageneinc.com),  
[www.antageneinc.com](http://www.antageneinc.com)