



## p27Kip1 (Ab-10) Antibody

**Cat. #:** ANTY021150

**Species:** Human, Mouse and Rat

**Quantity:** 100ug

**Concentration:** 100ug/100ul

**Storage and Stability:**

Store at -20°C/1 year

**Immunogen:**

The antiserum was produced against synthesized non-phosphopeptide derived from human p27Kip1 around the phosphorylation site of serine 10 (N-G-SP-P-S).

**Specificity:**

p27Kip1 (Ab-10) antibody detects endogenous levels of total p27Kip1 protein.

**Tested Application:** WB, IHC

**Application Notes:** Rabbit IgG in phosphate buffered saline (without Mg<sup>2+</sup> and Ca<sup>2+</sup>), pH 7.4, 150mM NaCl, 0.02% sodium azide and 50% glycerol.

**Raised In:** Rabbit

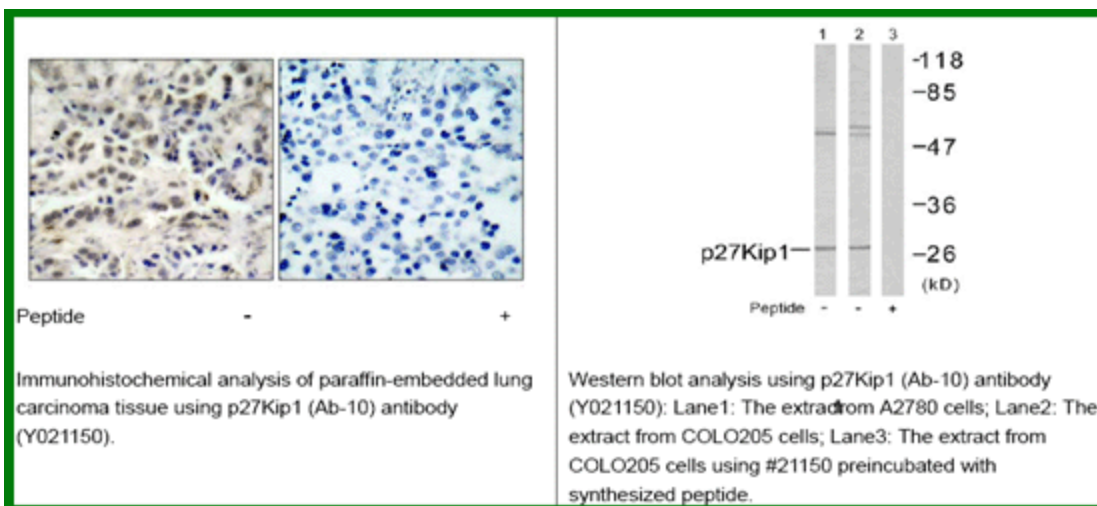
**Purity:** The antibody was affinity-purified from rabbit antiserum by affinity-chromatography using epitope-specific immunogen.

**Storage buffer:** WB: 1:500~1:1000 IHC: 1:50~1:100

**Form:** Liquid

**Reference:**

Le XF, et al. (2003) J Biol Chem. Connor MK, et al. (2003) Mol Biol Cell; 14(1): 201-13. McAllister SS, et al. (2003) Mol Cell Biol; 23(1): 216-28. Chopra S, et al. (2002) J Biol Chem; 277(36): 32413-6. Boehm M, et al. (2002) EMBO J; 21(13): 3390-401.



**For research use only**

Antagene, Inc. Toll Free: 1-866-964-2589, Fax: 1-888-225-1868, [info@antageneinc.com](mailto:info@antageneinc.com),  
[www.antageneinc.com](http://www.antageneinc.com)