



FKHR (Ab-256) Antibody

Cat. #: ANTY021138

Species: Human, Mouse and Rat

Quantity: 100ug

Concentration: 100ug/100ul

Storage and Stability:

Store at -20°C/1 year

Immunogen:

The antiserum was produced against synthesized non-phosphopeptide derived from human FKHR around the phosphorylation site of serine 256 (A-A-SP-M-D).

Specificity:

FKHR (Ab-256) antibody detects endogenous levels of total FKHR protein.

Tested Application: WB, IHC

Application Notes: Rabbit IgG in phosphate buffered saline (without Mg²⁺ and Ca²⁺), pH 7.4, 150mM NaCl, 0.02% sodium azide and 50% glycerol.

Raised In: Rabbit

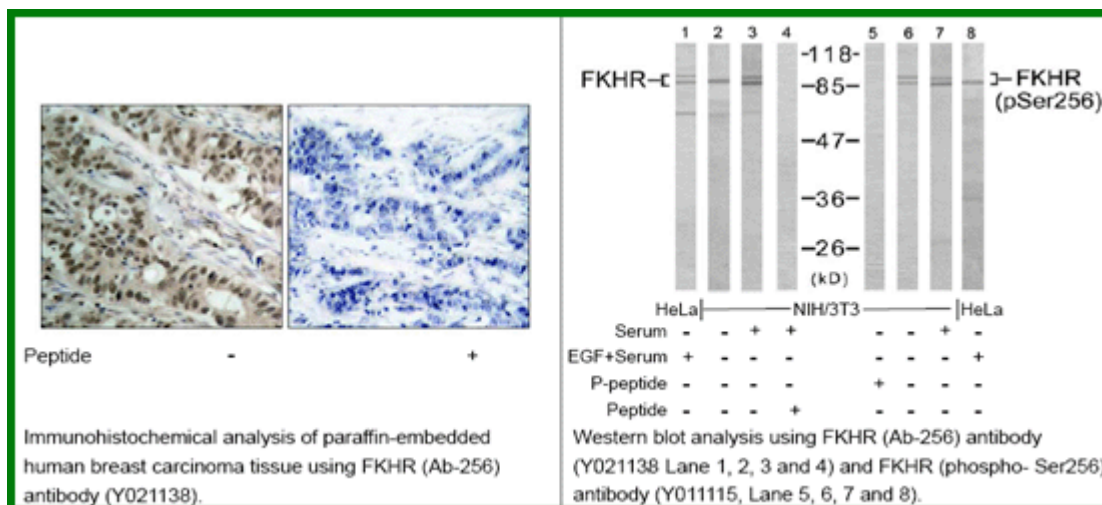
Purity: The antibody was affinity-purified from rabbit antiserum by affinity-chromatography using epitope-specific immunogen.

Storage buffer: WB: 1:500~1:1000 IHC: 1:50~1:100

Form: Liquid

Reference:

Gan L, et al. (2005) J Neurochem; 93(5): 1209-19. Smith WW, et al. (2005) J Cell Biol; 169(2): 331-9. Di Maira G, et al. (2005) Cell Death Differ; 12(6): 668-77. Horn S, et al. (2004) Leukemia; 18(11): 1839-49. Zhao X, et al. (2004) Biochem J 4; 378(Pt 3): 839-49.



For research use only

Antagene, Inc. Toll Free: 1-866-964-2589, Fax: 1-888-225-1868, info@antageneinc.com,
www.antageneinc.com