



p90RSK (Ab-352) Antibody

Cat. #: ANTY021136

Species: Human, Mouse and Rat

Quantity: 100ug

Concentration: 100ug/100ul

Storage and Stability:

Store at -20°C/1 year

Immunogen:

The antiserum was produced against synthesized non-phosphopeptide derived from mouse p90RSK around the phosphorylation site of serine 352 (R-D-SP-P-G).

Specificity:

p90RSK (Ab-352) antibody detects endogenous levels of total p90RSK protein.

Tested Application: WB

Application Notes: Rabbit IgG in phosphate buffered saline (without Mg²⁺ and Ca²⁺), pH 7.4, 150mM NaCl, 0.02% sodium azide and 50% glycerol.

Raised In: Rabbit

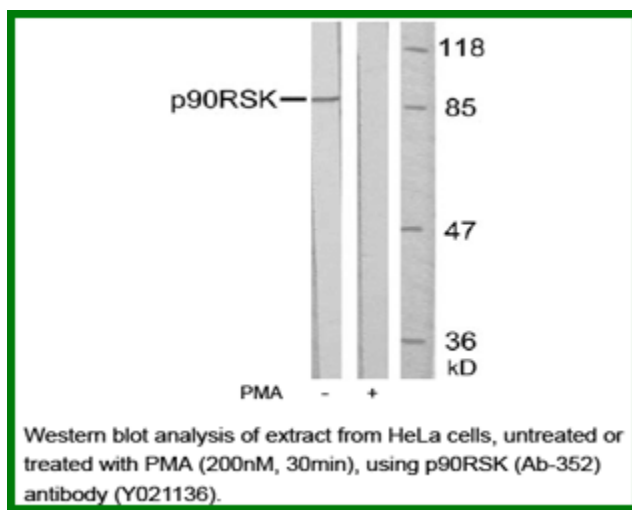
Purity: The antibody was affinity-purified from rabbit antiserum by affinity-chromatography using epitope-specific immunogen.

Storage buffer: WB: 1:500~1:1000

Form: Liquid

Reference:

Silverman E, et al. Mol Cell Biol. 2004 Dec; 24(24): 10573-10583. Itoh S, et al. J Biol Chem 2005 Jun 24; 280(25): 24135-24142 Eisenmann KM, et al. Cancer Res 2003 Dec 01; 63(23): 8330-7



For research use only

Antagene, Inc. Toll Free: 1-866-964-2589, Fax: 1-888-225-1868, info@antageneinc.com,
www.antageneinc.com