



SEK1/MKK4 (Ab-261) Antibody

Cat. #: ANTY021131

Species: Human, Mouse and Rat

Quantity: 100ug

Concentration: 100ug/100ul

Storage and Stability:

Store at -20°C/1 year

Immunogen:

The antiserum was produced against synthesized non-phosphopeptide derived from human SEK1/MKK4 around the phosphorylation site of Threonine 261 (A-K-TP-R-D).

Specificity:

SEK1/MKK4 (Ab-261) antibody detects endogenous levels of total SEK1/MKK4 protein.

Tested Application: IHC

Application Notes: Rabbit IgG in phosphate buffered saline (without Mg²⁺ and Ca²⁺), pH 7.4, 150mM NaCl, 0.02% sodium azide and 50% glycerol.

Raised In: Rabbit

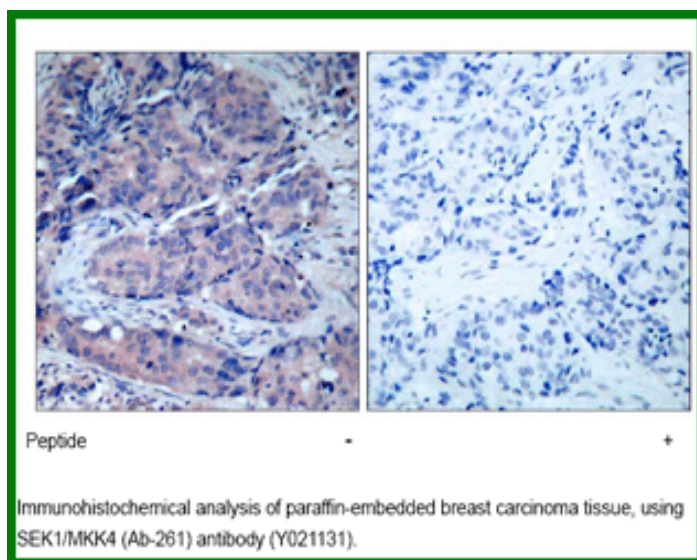
Purity: The antibody was affinity-purified from rabbit antiserum by affinity-chromatography using epitope-specific immunogen.

Storage buffer: IHC: 1:50~1:100

Form: Liquid

Reference:

Wang W, et al. (2002) Mol Cell Biol; 22(10): 3389-403. Leung IW, et al. (2001) J Biol Chem; 276(3): 1961-7.



For research use only

Antagene, Inc. Toll Free: 1-866-964-2589, Fax: 1-888-225-1868, info@antageneinc.com,
www.antageneinc.com