



AMPK1/AMPK2 (Ab-485/491) Antibody

Cat. #: ANTY021130

Species: Human, Mouse and Rat

Quantity: 100ug

Concentration: 100ug/100ul

Storage and Stability:

Store at -20°C/1 year

Immunogen:

The antiserum was produced against synthesized non-phosphopeptide derived from human AMPK1/AMPK2 around the phosphorylation site of serine 485 or serine 491 (S-G-SP-V-S).

Specificity:

AMPK1/AMPK2 (Ab-485/491) antibody detects endogenous levels of total AMPK1/ AMPK2 protein.

Tested Application: IHC

Application Notes: Rabbit IgG in phosphate buffered saline (without Mg²⁺ and Ca²⁺), pH 7.4, 150mM NaCl, 0.02% sodium azide and 50% glycerol.

Raised In: Rabbit

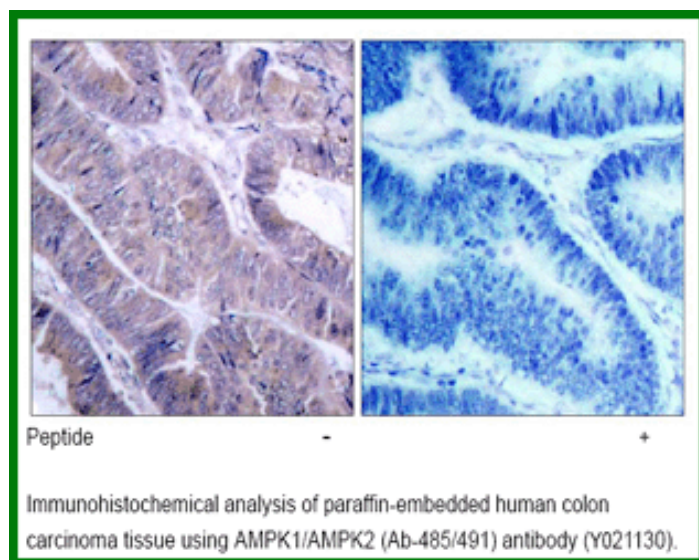
Purity: The antibody was affinity-purified from rabbit antiserum by affinity-chromatography using epitope-specific immunogen.

Storage buffer: IHC: 1:50~1:100

Form: Liquid

Reference:

Kim JE, et al. (2005) J Proteome Res. 4(4): 1339-1346. Woods A, et al. (2003) J Biol Chem. 278(31): 28434-28442.



For research use only

Antagene, Inc. Toll Free: 1-866-964-2589, Fax: 1-888-225-1868, info@antageneinc.com,
www.antageneinc.com