



PLCy1(Ab-783) Antibody

Cat. #: ANTY021129

Species: Human, Mouse and Rat

Quantity: 100ug

Concentration: 100ug/100ul

Storage and Stability:

Store at -20°C/1 year

Immunogen:

The antiserum was produced against synthesized non-phosphopeptide derived from human PLCy1 around the phosphorylation site of tyrosine 783 (G-F-YP-V-E).

Specificity:

PLCy1 (Ab-783) antibody detects endogenous levels of total PLCy1 protein.

Tested Application: WB

Application Notes: Rabbit IgG in phosphate buffered saline (without Mg²⁺ and Ca²⁺), pH 7.4, 150mM NaCl, 0.02% sodium azide and 50% glycerol.

Raised In: Rabbit

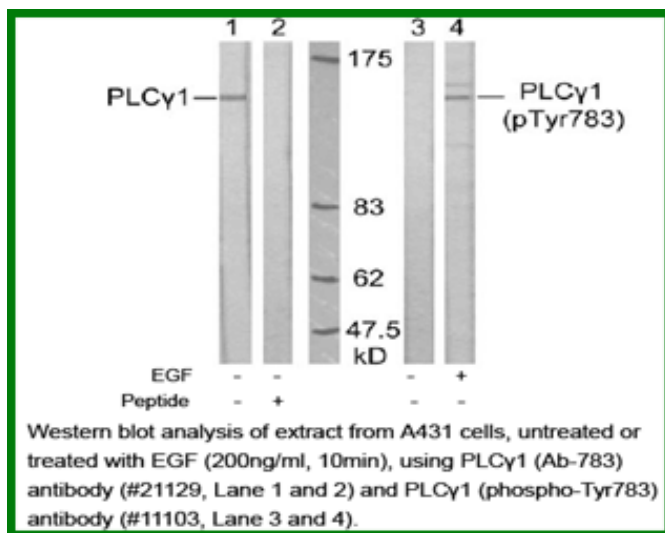
Purity: The antibody was affinity-purified from rabbit antiserum by affinity-chromatography using epitope-specific immunogen.

Storage buffer: WB: 1:500~1:1000

Form: Liquid

Reference:

DeBell KE, et al. Mol Cell Biol. 1999 Nov; 19(11): 7388-7398. Verí MC, et al. Mol Cell Biol. 2001 Oct; 21(20): 6939-6950. Sette C, et al. EMBO J. 2002 Oct 15; 21(20): 5386-5395.



For research use only

Antagene, Inc. Toll Free: 1-866-964-2589, Fax: 1-888-225-1868, info@antageneinc.com,
www.antageneinc.com