



PKD/PKC μ (Ab-910) Antibody

Cat. #: ANTY021128

Species: Human, Mouse and Rat

Quantity: 100ug

Concentration: 100ug/100ul

Storage and Stability:

Store at -20°C/1 year

Immunogen:

The antiserum was produced against synthesized non-phosphopeptide derived from human PKD/PKC μ around the phosphorylation site of serine 910 (R-V-SP-I-L).

Specificity:

PKD/PKC μ (Ab-910) antibody detects endogenous levels of total PKD/PKC μ protein.

Tested Application: WB

Application Notes: Rabbit IgG in phosphate buffered saline (without Mg²⁺ and Ca²⁺), pH 7.4, 150mM NaCl, 0.02% sodium azide and 50% glycerol.

Raised In: Rabbit

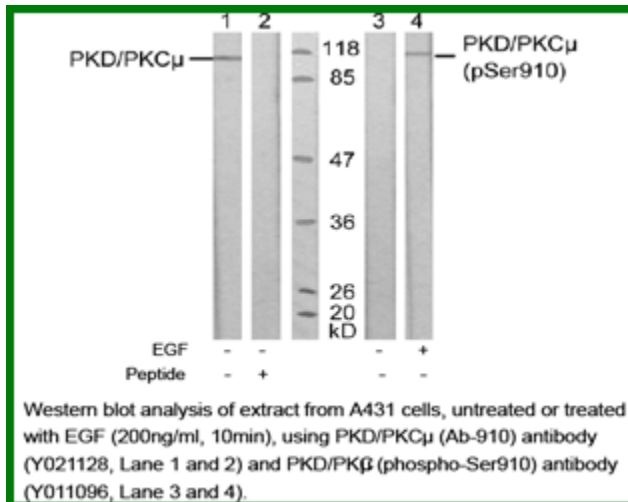
Purity: The antibody was affinity-purified from rabbit antiserum by affinity-chromatography using epitope-specific immunogen.

Storage buffer: WB: 1:500~1:1000

Form: Liquid

Reference:

Matthews SA, et al. J Biol Chem 1999 Sep; 274(37): 26543-26549 Brandlin I, et al. J Biol Chem 2002 Feb; 277(8): 6490-6496 Storz P, et al. Mol Pharmacol 2004 Oct; 66(4): 870-879



For research use only

Antagene, Inc. Toll Free: 1-866-964-2589, Fax: 1-888-225-1868, info@antageneinc.com,
www.antageneinc.com