



## PKD/PKC $\mu$ (Ab-738) Antibody

**Cat. #:** ANTY021126

**Species:** Human, Mouse and Rat

**Quantity:** 100ug

**Concentration:** 100ug/100ul

**Storage and Stability:**

Store at -20°C/1 year

**Immunogen:**

The antiserum was produced against synthesized non-phosphopeptide derived from human PKD/PKC $\mu$  around the phosphorylation site of serine 738 (E-K-SP-F-R).

**Specificity:**

PKD/PKC $\mu$  (Ab-738) antibody detects endogenous levels of total PKD/PKC $\mu$  protein.

**Tested Application:** WB

**Application Notes:** Rabbit IgG in phosphate buffered saline (without Mg<sup>2+</sup> and Ca<sup>2+</sup>), pH 7.4, 150mM NaCl, 0.02% sodium azide and 50% glycerol.

**Raised In:** Rabbit

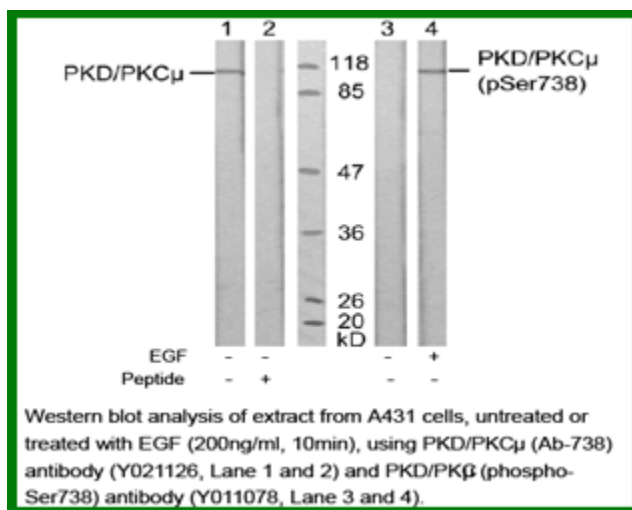
**Purity:** The antibody was affinity-purified from rabbit antiserum by affinity-chromatography using epitope-specific immunogen.

**Storage buffer:** WB: 1:500~1:1000

**Form:** Liquid

**Reference:**

Storz P, et al. Mol Cell Biol. 2004 Apr; 24(7): 2614-2626. Storz P, et al. Mol Cell Biol. 2005 Oct; 25(19): 8520-8530. Zhang W, et al. J Biol Chem 2005 May 13; 280(19): 19036-19044



**For research use only**

Antagene, Inc. Toll Free: 1-866-964-2589, Fax: 1-888-225-1868, [info@antageneinc.com](mailto:info@antageneinc.com),  
[www.antageneinc.com](http://www.antageneinc.com)