



IKK α (Ab-23) Antibody

Cat. #: ANTY021123

Species: Human, Mouse and Rat

Quantity: 100ug

Concentration: 100ug/100ul

Storage and Stability:

Store at -20°C/1 year

Immunogen:

The antiserum was produced against synthesized non-phosphopeptide derived from human IKK α around the phosphorylation site of Threonine 23 (L-G-TP-G-G).

Specificity:

IKK α (Ab-23) Antibody detects endogenous levels of total IKK α protein.

Tested Application: WB and IHC

Application Notes: Rabbit IgG in phosphate buffered saline (without Mg²⁺ and Ca²⁺), pH 7.4, 150mM NaCl, 0.02% sodium azide and 50% glycerol.

Raised In: Rabbit

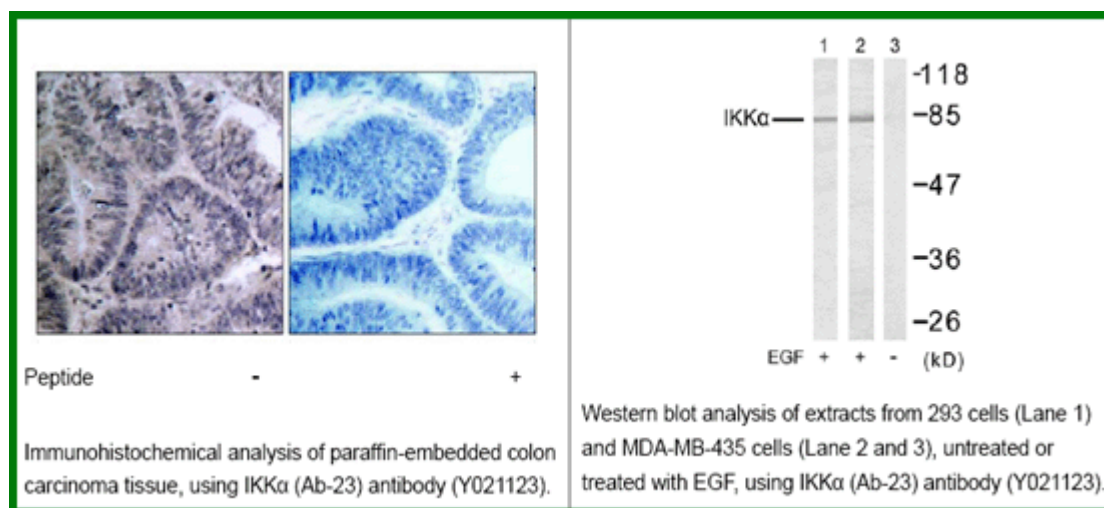
Purity: The antibody was affinity-purified from rabbit antiserum by affinity-chromatography using epitope-specific immunogen.

Storage buffer: WB: 1:500~1:1000 IHC: 1:50~1:100

Form: Liquid

Reference:

Yuan ZQ, et al.(2002)J Biol Chem; 277(33): 29973-82. Ozes ON, et al. (1999)Nature; 401(6748): 82-5.



For research use only

Antagene, Inc. Toll Free: 1-866-964-2589, Fax: 1-888-225-1868, info@antageneinc.com,
www.antageneinc.com