



## JAK2 (Ab-221) Antibody

**Cat. #:** ANTY021120

**Species:** Human, Mouse and Rat

**Quantity:** 100ug

**Concentration:** 100ug/100ul

**Storage and Stability:**

Store at -20°C/1 year

**Immunogen:**

The antiserum was produced against synthesized non-phosphopeptide derived from human JAK2 around the phosphorylation site of tyrosine 221 (Q-D-YP-H-I).

**Specificity:**

JAK2 (Ab-221) antibody detects endogenous levels of total JAK2 protein.

**Tested Application:** IHC

**Application Notes:** Rabbit IgG in phosphate buffered saline (without Mg<sup>2+</sup> and Ca<sup>2+</sup>), pH 7.4, 150mM NaCl, 0.02% sodium azide and 50% glycerol.

**Raised In:** Rabbit

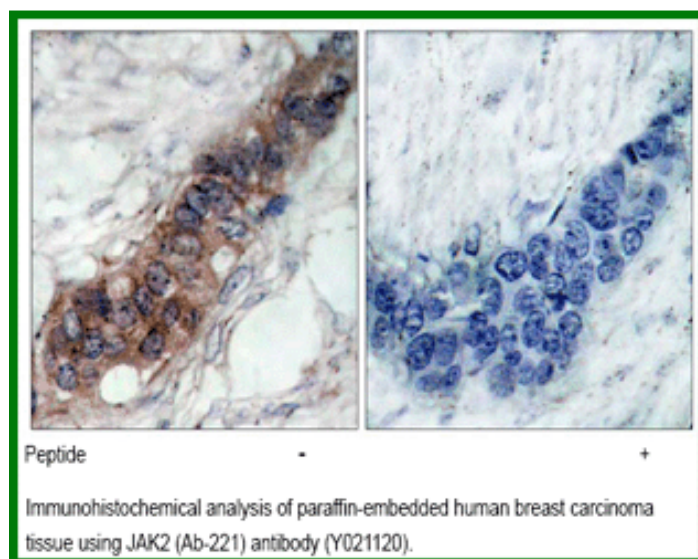
**Purity:** The antibody was affinity-purified from rabbit antiserum by affinity-chromatography using epitope-specific immunogen.

**Storage buffer:** IHC: 1:50~1:100

**Form:** Liquid

**Reference:**

Feener EP, et al.(2004) Mol Cell Biol. 24(11): 4968-4978. Argetsinger LS, et al.(2004) Mol Cell Biol. 24(11): 4955-4967.



**For research use only**

Antagene, Inc. Toll Free: 1-866-964-2589, Fax: 1-888-225-1868, [info@antageneinc.com](mailto:info@antageneinc.com),  
[www.antageneinc.com](http://www.antageneinc.com)