



JAK1 (Ab-1022) Antibody

Cat. #: ANTY021119

Species: Human, Mouse and Rat

Quantity: 100ug

Concentration: 100ug/100ul

Storage and Stability:

Store at -20°C/1 year

Immunogen:

The antiserum was produced against synthesized phosphopeptide derived from human JAK1 around the phosphorylation site of tyrosine 1022 (K-E-YP-Y-T).

Specificity:

JAK1 (Ab-1022) antibody detects endogenous levels of total JAK1 protein.

Tested Application: WB, IHC

Application Notes: Rabbit IgG in phosphate buffered saline (without Mg²⁺ and Ca²⁺), pH 7.4, 150mM NaCl, 0.02% sodium azide and 50% glycerol.

Raised In: Rabbit

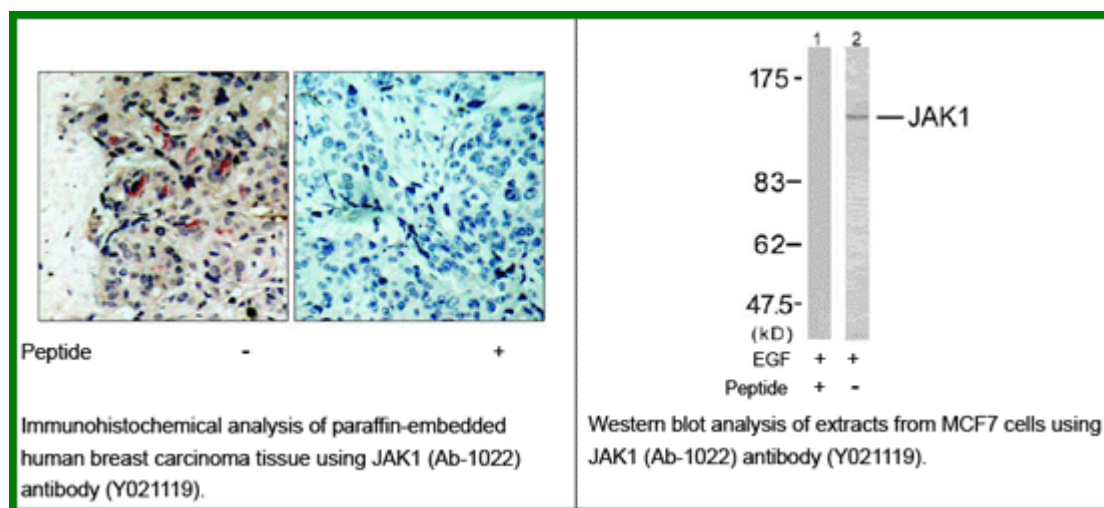
Purity: The antibody was affinity-purified from rabbit antiserum by affinity-chromatography using epitope-specific immunogen.

Storage buffer: WB: 1:500~1:1000 IHC: 1:50~1:100

Form: Liquid

Reference:

Zheng H, et al. (2005) Mol Cell Proteomics. 4(6):721-730. Wang R, et al. (2003) Arch Biochem Biophys. 410(1): 7-15.



For research use only

Antagene, Inc. Toll Free: 1-866-964-2589, Fax: 1-888-225-1868, info@antageneinc.com,
www.antageneinc.com