



Src(Ab-418)Antibody

Cat. #: ANTY021115

Species: Human, Mouse and Rat

Quantity: 100ug

Concentration: 100ug/100ul

Storage and Stability:

Store at -20°C/1 year

Immunogen:

The antiserum was produced against synthesized non-phosphopeptide derived from human Src around the phosphorylation site of tyrosine 418 (N-E-YP-T-A).

Specificity:

Src (Ab-418) antibody detects endogenous levels of total Src protein.

Tested Application: WB

Application Notes: Rabbit IgG in phosphate buffered saline (without Mg²⁺ and Ca²⁺), pH 7.4, 150mM NaCl, 0.02% sodium azide and 50% glycerol.

Raised In: Rabbit

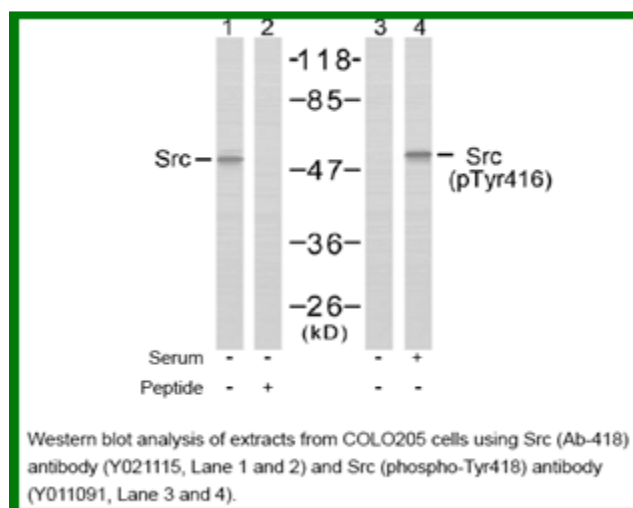
Purity: The antibody was affinity-purified from rabbit antiserum by affinity-chromatography using epitope-specific immunogen.

Storage buffer: WB: 1:500~1:1000

Form: Liquid

Reference:

DuFilho M, et al. (2005) J Biol Chem. 280(43):35999-36006. Sanders MA, et al. (2005) J Biol Chem. 280(25): 23516-23522. Murugappan S, et al. (2005) Blood. 106(2):550-557. Gu JJ, et al. (2005) Blood. 105(8): 3270-3277. Zhou S, et al. (2004) J Biol Chem.279 (52): 54463-54469.



For research use only

Antagene, Inc. Toll Free: 1-866-964-2589, Fax: 1-888-225-1868, info@antageneinc.com,
www.antageneinc.com