



Chk1 (Ab-317) Antibody

Cat. #: ANTY021114

Species: Human and Rat

Quantity: 100ug

Concentration: 100ug/100ul

Storage and Stability:

Store at -20°C/1 year

Immunogen:

The antiserum was produced against synthesized non-phosphopeptide derived from human Chk1 around the phosphorylation site of serine 317 (S-S-SP-Q-P)

Specificity:

Chk1 (Ab-317) antibody detects endogenous levels of total Chk1 protein.

Tested Application: WB and IHC

Application Notes: Rabbit IgG in phosphate buffered saline (without Mg²⁺ and Ca²⁺), pH 7.4, 150mM NaCl, 0.02% sodium azide and 50% glycerol.

Raised In: Rabbit

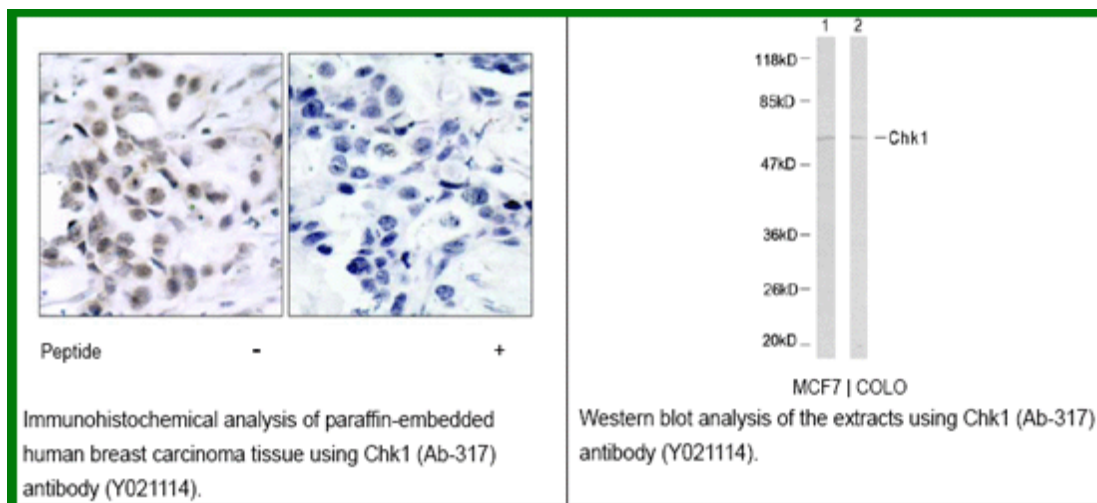
Purity: The antibody was affinity-purified from rabbit antiserum by affinity-chromatography using epitope-specific immunogen.

Storage buffer: WB: 1:500~1:1000 IHC:1:50~1:100

Form: Liquid

Reference:

Zhang YW, et al. (2005) Mol Cell; 19(5): 607-18. Bhoumik A, et al. (2005) Mol Cell; 18(5): 577-87. Rocha S, et al. (2005) EMBO J. Clarke CA, et al. (2005) Biochem J. Yu X, et al. (2004) Mol Cell Biol; 24(21): 9478-86.



For research use only

Antagene, Inc. Toll Free: 1-866-964-2589, Fax: 1-888-225-1868, info@antageneinc.com,
www.antageneinc.com