



Caveolin-1 (Ab-14) Antibody

Cat. #: ANTY021112

Species: Human, Mouse and Rat

Quantity: 100ug

Concentration: 100ug/100ul

Storage and Stability:

Store at -20°C/1 year

Immunogen:

The antiserum was produced against synthesized non-phosphopeptide derived from human Caveolin-1 around the phosphorylation site of Tyrosine 14 (H-L-YP-T-V).

Specificity:

Caveolin-1 (Ab-14) antibody detects endogenous levels of total Caveolin-1 protein.

Tested Application: WB

Application Notes: Rabbit IgG in phosphate buffered saline (without Mg²⁺ and Ca²⁺), pH 7.4, 150mM NaCl, 0.02% sodium azide and 50% glycerol.

Raised In: Rabbit

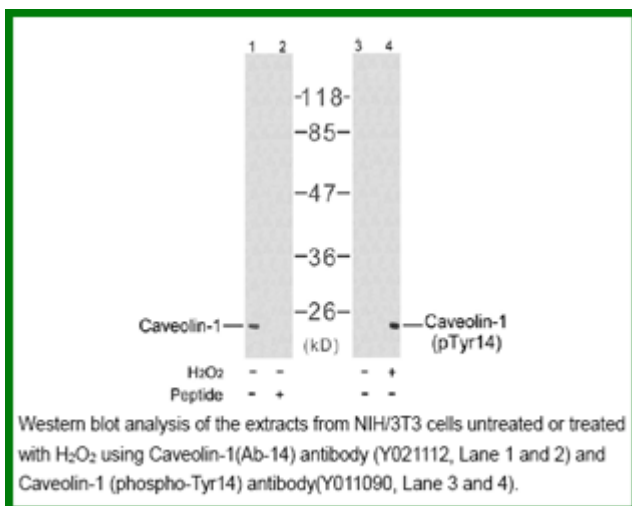
Purity: The antibody was affinity-purified from rabbit antiserum by affinity-chromatography using epitope-specific immunogen.

Storage buffer: WB: 1:500~1:1000

Form: Liquid

Reference:

Zhang Y, et al. (2005) Mol Cell Proteomics. 4(9): 1240-1250. Labrecque L, et al. (2004) J Biol Chem. 279(50): 52132-52140. Fielding PE, et al. (2004) Biochemistry. 43(9): 2578-2586. Labrecque L, et al. (2003) Mol Biol Cell. 14(1): 334-347. Maggi D, et al. (2002) Biochem Biophys Res Commun. 295(5): 1085-1089.



For research use only

Antagene, Inc. Toll Free: 1-866-964-2589, Fax: 1-888-225-1868, info@antageneinc.com,
www.antageneinc.com