



CDK2 (Ab-160) Antibody

Cat. #: ANTY021111

Species: Human, Mouse and Rat

Quantity: 100ug

Concentration: 100ug/100ul

Storage and Stability:

Store at -20°C/1 year

Immunogen:

The antiserum was produced against synthesized non-phosphopeptide derived from human CDK2 around the phosphorylation site of threonine160 (T-Y-TP-H-E).

Specificity:

CDK2 (Ab-160) antibody detects endogenous levels of total CDK2 protein.

Tested Application: WB

Application Notes: Rabbit IgG in phosphate buffered saline (without Mg²⁺ and Ca²⁺), pH 7.4, 150mM NaCl, 0.02% sodium azide and 50% glycerol.

Raised In: Rabbit

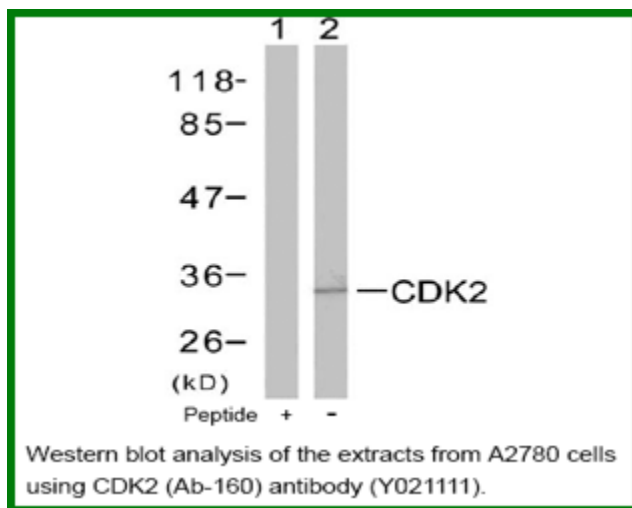
Purity: The antibody was affinity-purified from rabbit antiserum by affinity-chromatography using epitope-specific immunogen.

Storage buffer: WB: 1:500~1:1000

Form: Liquid

Reference:

Ukomadu C, et al.(2003) J Biol Chem; 278(7): 4840-6 Morris MC, et al.(2002)J Biol Chem; 277(26): 23847-53 Brown NR, et al.(1999)J Biol Chem; 274(13): 8746-56 Liu Y, et al.(2004) J Biol Chem; 279(6): 4507-14



For research use only

Antagene, Inc. Toll Free: 1-866-964-2589, Fax: 1-888-225-1868, info@antageneinc.com,
www.antageneinc.com