



Tau (Ab-404) Antibody

Cat. #: ANTY021101

Species: Human, Mouse and Rat

Quantity: 100ug

Concentration: 100ug/100ul

Storage and Stability:

Store at -20°C/1 year

Immunogen:

The antiserum was produced against synthesized non-phosphopeptide derived from human Tau around the phosphorylation site of serine 404 (D-T-SP-P-R).

Specificity:

Tau (Ab-404) antibody detects endogenous levels of total Tau protein.

Tested Application: WB

Application Notes: Rabbit IgG in phosphate buffered saline (without Mg²⁺ and Ca²⁺), pH 7.4, 150mM NaCl, 0.02% sodium azide and 50% glycerol.

Raised In: Rabbit

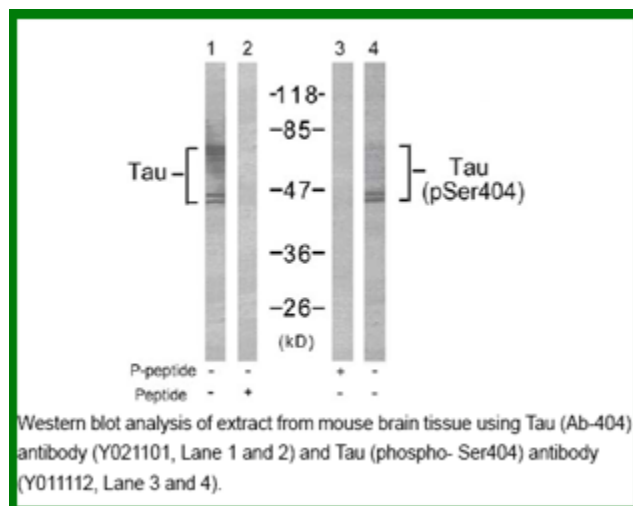
Purity: The antibody was affinity-purified from rabbit antiserum by affinity-chromatography using epitope-specific immunogen.

Storage buffer: WB: 1:500~1:1000

Form: Liquid

Reference:

Li G, Yin H, et.al. (2004) J Biol Chem ; 279(16): 15938-45. Noble W, et al. (2003) Neuron ; 38(4): 555-65. Giasson BI, et al.(2002). Biochemistry; 41(51): 15376-87. Lee G., et.al. (1989). Neuron 2:1615-1624. Andreadis A.et.al. (1992) Biochemistry 31:10626-10633.



For research use only

Antagene, Inc. Toll Free: 1-866-964-2589, Fax: 1-888-225-1868, info@antageneinc.com,
www.antageneinc.com