



## Tau (Ab-181) Antibody

**Cat. #:** ANTY021096

**Species:** Human, Mouse and Rat

**Quantity:** 100ug

**Concentration:** 100ug/100ul

**Storage and Stability:**

Store at -20°C/1 year

**Immunogen:**

The antiserum was produced against synthesized non-phosphopeptide derived from human Tau around the phosphorylation site of threonine 181 (P-K-TP-P-P).

**Specificity:**

Tau (Ab-181) antibody detects endogenous levels of total Tau protein.

**Tested Application:** WB

**Application Notes:** Rabbit IgG in phosphate buffered saline (without Mg<sup>2+</sup> and Ca<sup>2+</sup>), pH 7.4, 150mM NaCl, 0.02% sodium azide and 50% glycerol.

**Raised In:** Rabbit

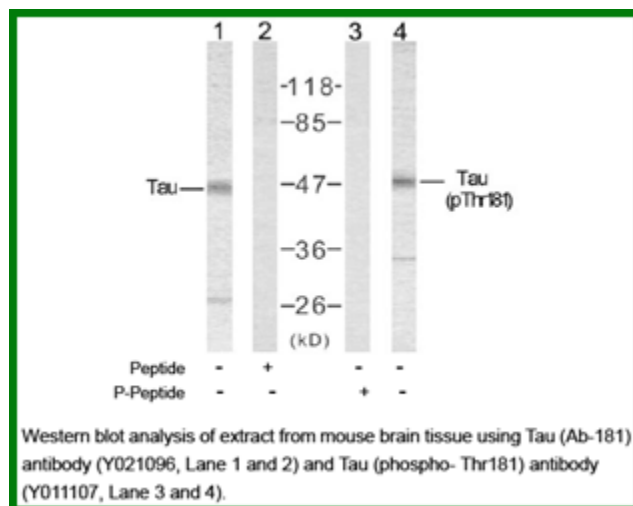
**Purity:** The antibody was affinity-purified from rabbit antiserum by affinity-chromatography using epitope-specific immunogen.

**Storage buffer:** WB: 1:500~1:1000

**Form:** Liquid

**Reference:**

Puig B, et al.(2005) Acta Neuropathol (Berl). 110(3):261-268. Pérez M, et al.(2005) Neuroscience. 130(2): 339-347. Fellgiebel A, et al.(2004) Biol Psychiatry. 56(4): 279-283. del C Alonso A, et al.(2004) J Biol Chem. 279(33): 34873-34881.



**For research use only**

Antagene, Inc. Toll Free: 1-866-964-2589, Fax: 1-888-225-1868, [info@antageneinc.com](mailto:info@antageneinc.com),  
[www.antageneinc.com](http://www.antageneinc.com)