



Ezrin (Ab-353) Antibody

Cat. #: ANTY021094

Species: Human and Mouse

Quantity: 100ug

Concentration: 100ug/100ul

Storage and Stability:

Store at -20°C/1 year

Immunogen:

The antiserum was produced against synthesized non-phosphopeptide derived from human Ezrin around the phosphorylation site of tyrosine 353 (Q-D-YP-E-E).

Specificity:

Ezrin (Ab-353) antibody detects endogenous levels of total Ezrin protein.

Tested Application: WB

Application Notes: Rabbit IgG in phosphate buffered saline (without Mg²⁺ and Ca²⁺), pH 7.4, 150mM NaCl, 0.02% sodium azide and 50% glycerol.

Raised In: Rabbit

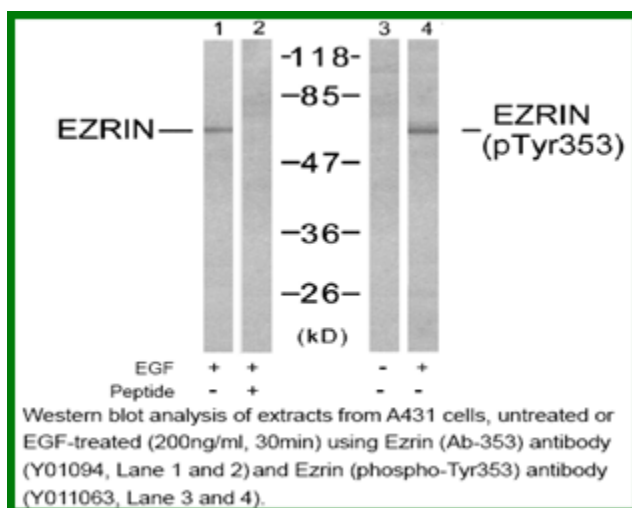
Purity: The antibody was affinity-purified from rabbit antiserum by affinity-chromatography using epitope-specific immunogen.

Storage buffer: WB: 1:500~1:1000

Form: Liquid

Reference:

Zhao H, et al. (2004) Proc Natl Acad Sci U S A 101 (25): 9485-90. Wang Q, et al. (2003) J Biol Chem 278(48): 47731-43. Gautreau A, et al. (1999) Proc Natl Acad Sci U S A: 96(13): 7300-5. Crepaldi T, et al. (1997) J Cell Biol: 28; 138(2): 423-34.



For research use only

Antagene, Inc. Toll Free: 1-866-964-2589, Fax: 1-888-225-1868, info@antageneinc.com,
www.antageneinc.com