



Tau (Ab-396) Antibody

Cat. #: ANTY021093

Species: Human, Mouse and Rat

Quantity: 100ug

Concentration: 100ug/100ul

Storage and Stability:

Store at -20°C/1 year

Immunogen:

The antiserum was produced against synthesized non-phosphopeptide derived from human Tau around the phosphorylation site of serine 396 (Y-K-SP-P-V).

Specificity:

Tau (Ab-396) antibody detects endogenous levels of total Tau protein.

Tested Application: WB

Application Notes: Rabbit IgG in phosphate buffered saline (without Mg²⁺ and Ca²⁺), pH 7.4, 150mM NaCl, 0.02% sodium azide and 50% glycerol.

Raised In: Rabbit

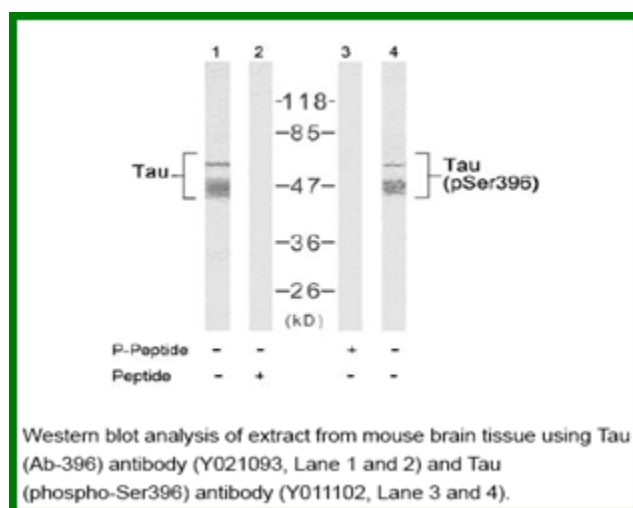
Purity: The antibody was affinity-purified from rabbit antiserum by affinity-chromatography using epitope-specific immunogen.

Storage buffer: WB: 1:500~1:1000

Form: Liquid

Reference:

Puig B, et al. (2005) Acta Neuropathol (Berl). 110(3):261-268. DeGiorgis JA, et al. (2005) J Proteome Res. 4(2): 306-315. Alonso Adel C, et al. (2004) J Biol Chem. 279(33): 34873-34881.



For research use only

Antagene, Inc. Toll Free: 1-866-964-2589, Fax: 1-888-225-1868, info@antageneinc.com,
www.antageneinc.com