



## EGFR (Ab-1092) Antibody

**Cat. #:** ANTY021074

**Species:** Human, Mouse and Rat

**Quantity:** 100ug

**Concentration:** 100ug/100ul

### Storage and Stability:

Store at -20°C/1 year

### Immunogen:

The antiserum was produced against synthesized non-phosphopeptide derived from human EGFR around the phosphorylation site of tyrosine 1092 (P-E-YP-I-N).

### Specificity:

EGFR (Ab-1092) antibody detects endogenous levels of total EGFR protein.

**Tested Application:** WB and IHC

**Application Notes:** Rabbit IgG in phosphate buffered saline (without Mg<sup>2+</sup> and Ca<sup>2+</sup>), pH 7.4, 150mM NaCl, 0.02% sodium azide and 50% glycerol.

**Raised In:** Rabbit

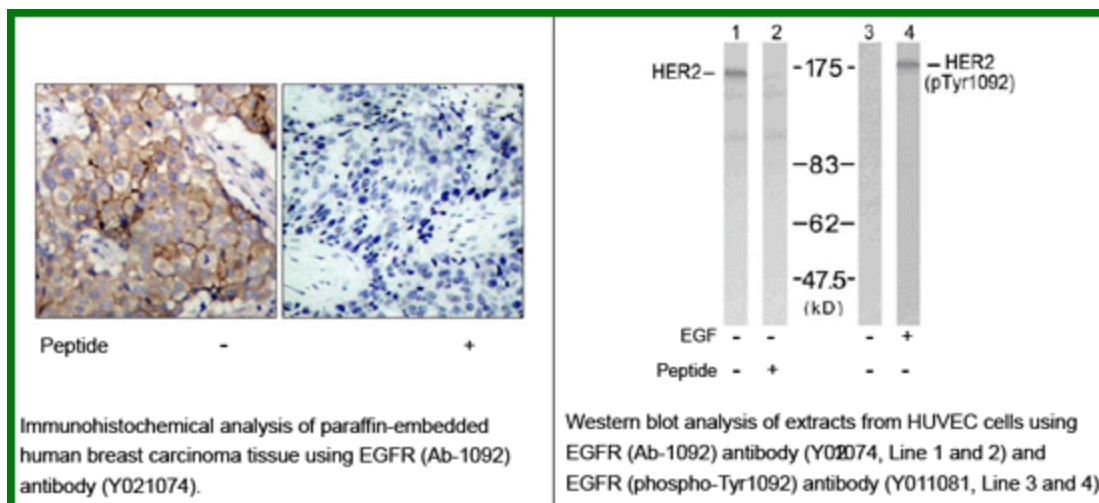
**Purity:** The antibody was affinity-purified from rabbit antiserum by affinity-chromatography using epitope-specific immunogen.

**Storage buffer:** WB: 1:500~1:1000 IHC: 1:50~1:100

**Form:** Liquid

### Reference:

Buerger C, et al. (2003) J Biol Chem; 278(39): 37610-21. Wang XQ, (2003) J Biol Chem; 278(49): 48770-8. Saito T, et al. (2004) Endocrinology; 145(9): 4232-43. Pao W, et al. (2004) Proc Natl Acad Sci U S A; 101(36): 13306-11. Mattila E, et al. (2005) Nat Cell Biol; 7(1): 78-85.



**For research use only**

Antagene, Inc. Toll Free: 1-866-964-2589, Fax: 1-888-225-1868, [info@antageneinc.com](mailto:info@antageneinc.com),  
[www.antageneinc.com](http://www.antageneinc.com)