



## HER2 (Ab-1248) Antibody

**Cat. #:** ANTY021072

**Species:** Human, Mouse and Rat

**Quantity:** 100ug

**Concentration:** 100ug/100ul

**Storage and Stability:**

Store at -20°C/1 year

**Immunogen:**

The antiserum was produced against synthesized non-phosphopeptide derived from human HER2 around the phosphorylation site of tyrosine 1248 (P-E-YP-L-G).

**Specificity:**

HER2 (Ab-1248) antibody detects endogenous levels of total HER2 protein.

**Tested Application:** WB and IHC

**Application Notes:** Rabbit IgG in phosphate buffered saline (without Mg<sup>2+</sup> and Ca<sup>2+</sup>), pH 7.4, 150mM NaCl, 0.02% sodium azide and 50% glycerol.

**Raised In:** Rabbit

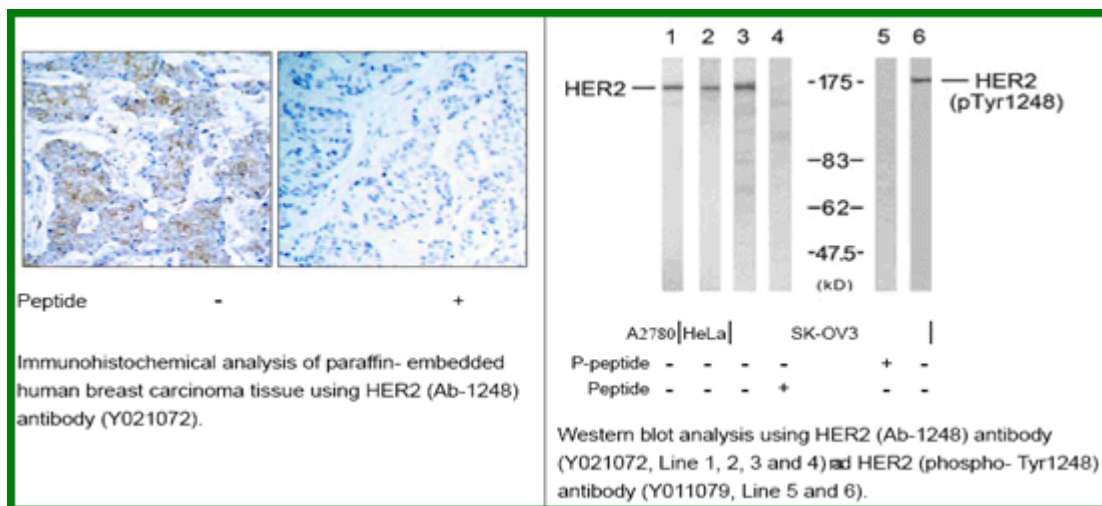
**Purity:** The antibody was affinity-purified from rabbit antiserum by affinity-chromatography using epitope-specific immunogen.

**Storage buffer:** WB: 1:500~1:1000 IHC: 1:50~1:100

**Form:** Liquid

**Reference:**

Ramsauer VP, et al. (2003) J Biol Chem; 278(32): 30142-7. Jepson S, et al. (2002) Oncogene; 21(49): 7524-32. Ren Z, et al. (2002) J Biol Chem; 277(41): 38486-93. Eppenberger-Castori S, et al. (2001) J Clin Oncol; 19(3): 645-56.



**For research use only**

Antagene, Inc. Toll Free: 1-866-964-2589, Fax: 1-888-225-1868, [info@antageneinc.com](mailto:info@antageneinc.com),  
[www.antageneinc.com](http://www.antageneinc.com)