



Estrogen Receptor- α (Ab-118) Antibody

Cat. #: ANTY021067

Species: Human and Mouse

Quantity: 100ug

Concentration: 100ug/100ul

Storage and Stability:

Store at -20°C/1 year

Immunogen:

The antiserum was produced against synthesized non-phosphopeptide derived from human Estrogen Receptor- α around the phosphorylation site of serine118 (Q-L-SP-P-F).

Specificity:

Estrogen Receptor- α (Ab-118) antibody detects endogenous levels of total Estrogen Receptor- α protein.

Tested Application: Western Blot and IHC

Application Notes: Rabbit IgG in phosphate buffered saline (without Mg²⁺ and Ca²⁺), pH 7.4, 150mM NaCl, 0.02% sodium azide and 50% glycerol.

Raised In: Rabbit

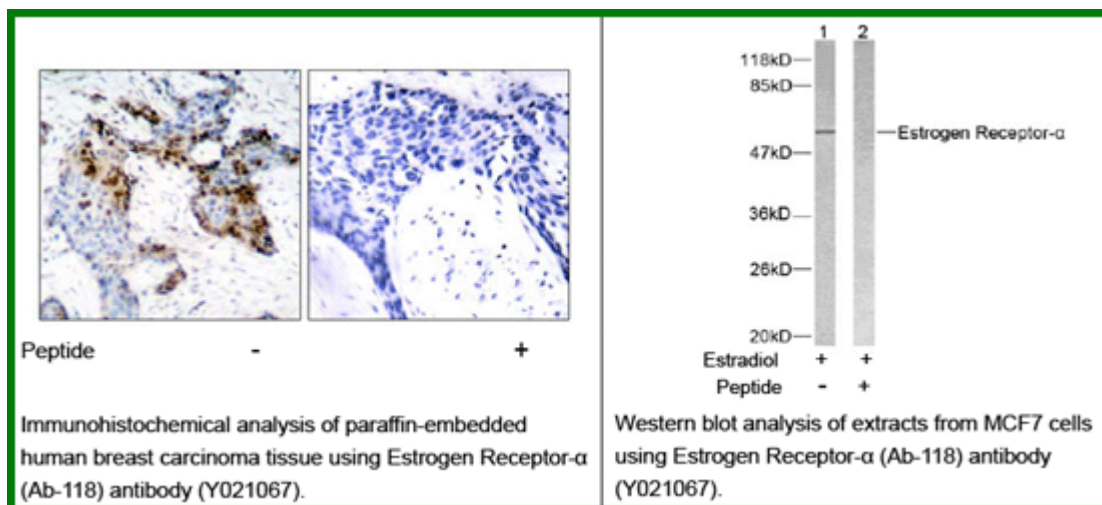
Purity: The antibody was affinity-purified from rabbit antiserum by affinity-chromatography using epitope-specific immunogen.

Storage buffer: WB: 1:500~1:1000 IHC: 1:50~1:100

Form: Liquid

Reference:

Medunjanin S, et al. (2005). J Biol Chem.80 (38):33006-33014. Masuhiro Y, et al. (2005). Proc Natl Acad Sci USA.102 (23): 8126-8131. Pentecost BT, et al. (2005). Mol Cell Endocrinol.238 (1-2): 9-25. Park KJ, et al. (2005). Mol Cell.18 (1): 71-82.



For research use only

Antagene, Inc. Toll Free: 1-866-964-2589, Fax: 1-888-225-1868, info@antageneinc.com,
www.antageneinc.com