



## Estrogen Receptor- $\alpha$ (Ab-106) Antibody

**Cat. #:** ANTY021066

**Species:** Human and Mouse

**Quantity:** 100ug

**Concentration:** 100ug/100ul

**Storage and Stability:**

Store at -20°C/1 year

**Immunogen:**

The antiserum was produced against synthesized non-phosphopeptide derived from human Estrogen Receptor- $\alpha$  around the phosphorylation site of serine 106 (S-P- SP-P-L).

**Specificity:**

Estrogen Receptor- $\alpha$  (Ab-106) antibody detects endogenous levels of total Estrogen Receptor- $\alpha$  protein.

**Tested Application:** Western Blot and IHC

**Application Notes:** Rabbit IgG in phosphate buffered saline (without Mg<sup>2+</sup> and Ca<sup>2+</sup>), pH 7.4, 150mM NaCl, 0.02% sodium azide and 50% glycerol.

**Raised In:** Rabbit

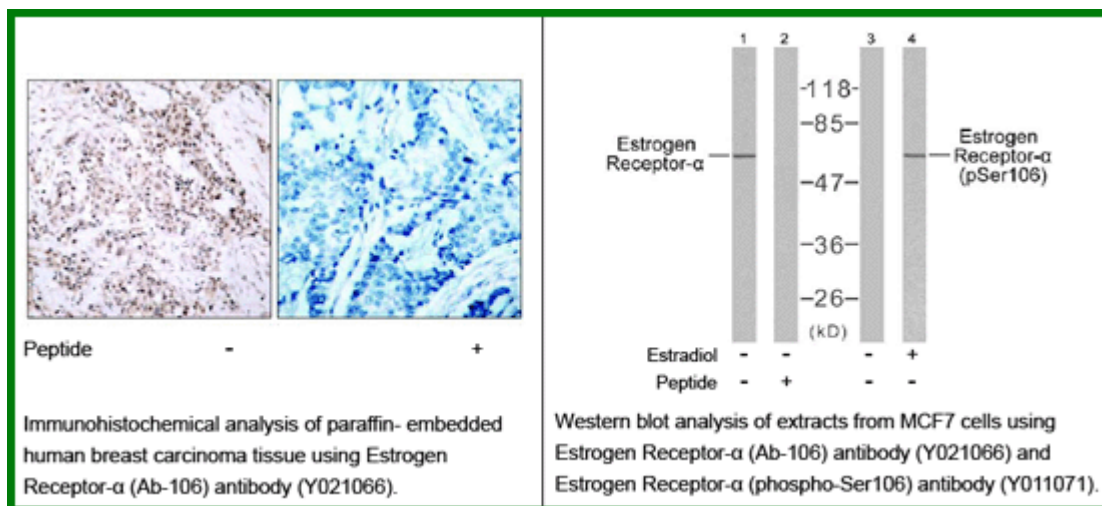
**Purity:** The antibody was affinity-purified from rabbit antiserum by affinity-chromatography using epitope-specific immunogen.

**Storage buffer:** WB: 1:500~1:1000 IHC: 1:50~1:100

**Form:** Liquid

**Reference:**

Medunjanin S, et al. (2005). J Biol Chem.80 (38):33006-33014. Dutertre M, et al. (2003). Mol Endocrinol.17 (7): 1296-1314. Chen D, et al. (2000). Mol Cell.6 (1): 127-137. Rogatsky I, et al. (1999). J Biol Chem.274 (32): 22296-22302.



**For research use only**

Antagene, Inc. Toll Free: 1-866-964-2589, Fax: 1-888-225-1868, [info@antageneinc.com](mailto:info@antageneinc.com),  
[www.antageneinc.com](http://www.antageneinc.com)