



BAD (Ab-155) Antibody

Cat. #: ANTY021064

Species: Human, Mouse, Rat

Quantity: 100ug

Concentration: 100ug/100ul

Storage and Stability:

Store at -20°C/1 year

Immunogen:

This antiserum was produced against synthesized non-phosphopeptide derived from human BAD around the phosphorylation site of serine 155 (R-M-SP-D-E).

Specificity:

BAD (Ab-155) antibody detects endogenous levels of total BAD protein.

Tested Application: WB, IHC

Application Notes: Rabbit IgG in phosphate buffered saline (without Mg²⁺ and Ca²⁺), pH 7.4, 150mM NaCl, 0.02% sodium azide and 50% glycerol.

Raised In: Rabbit

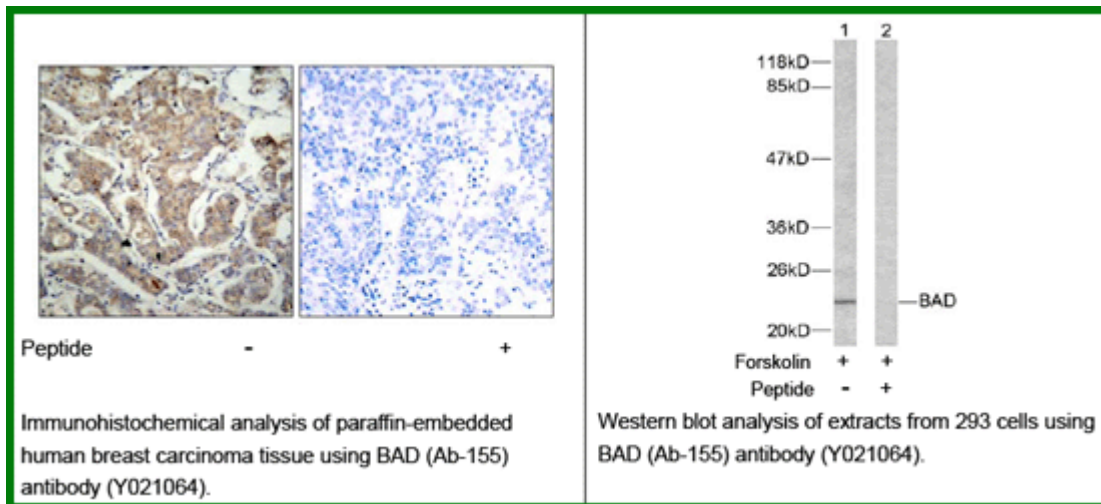
Purity: The antibody was affinity-purified from rabbit antiserum by affinity-chromatography using epitope-specific immunogen.

Storage buffer: WB: 1:500~1:1000 IHC: 1:50~1:100

Form: Liquid

Reference:

Moon EY, et al. (2003). Blood.101 (10): 4122-4130.



For research use only

Antagene, Inc. Toll Free: 1-866-964-2589, Fax: 1-888-225-1868, info@antageneinc.com,
www.antageneinc.com