



## BAD (Ab-136) Antibody

**Cat. #:** ANTY021063

**Species:** Human, Mouse, Rat

**Quantity:** 100ug

**Concentration:** 100ug/100ul

### Storage and Stability:

Store at -20°C/1 year

### Immunogen:

This antiserum was produced against synthesized non-phosphopeptide derived from human BAD around the phosphorylation site of serine136 (S-R-SP-A-P).

### Specificity:

BAD (Ab-136) antibody detects endogenous levels of total BAD protein.

**Tested Application:** WB, IHC

**Application Notes:** Rabbit IgG in phosphate buffered saline (without Mg<sup>2+</sup> and Ca<sup>2+</sup>), pH 7.4, 150mM NaCl, 0.02% sodium azide and 50% glycerol.

**Raised In:** Rabbit

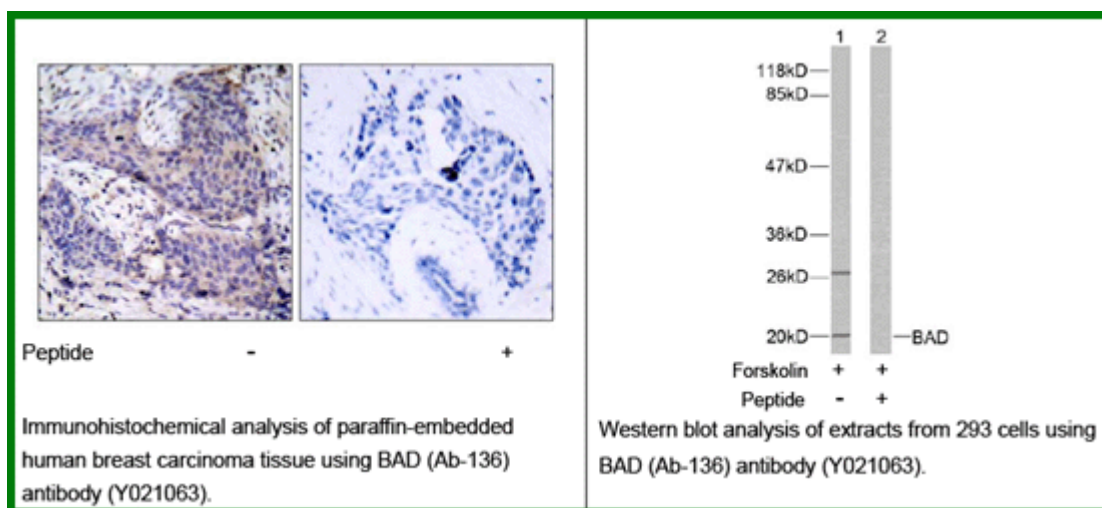
**Purity:** The antibody was affinity-purified from rabbit antiserum by affinity-chromatography using epitope-specific immunogen.

**Storage buffer:** WB: 1:500~1:1000 IHC: 1:50~1:100

**Form:** Liquid

### Reference:

Wang XQ, et al. (2001). J Biol Chem.276 (48): 44504-44511. Lee YI, et al. (2001). J Biol Chem.276 (20): 16969-16977. Maiti D, et al. (2001). J Biol Chem.276 (1): 329-333.



**For research use only**

Antagene, Inc. Toll Free: 1-866-964-2589, Fax: 1-888-225-1868, [info@antageneinc.com](mailto:info@antageneinc.com),  
[www.antageneinc.com](http://www.antageneinc.com)