



BAD(Ab-112)Antibody

Cat. #: ANTY021062

Species: Human, Mouse, Rat

Quantity: 100ug

Concentration: 100ug/100ul

Storage and Stability:

Store at -20°C/1 year

Immunogen:

This antiserum was produced against synthesized non-phosphopeptide derived from human BAD around the phosphorylation site of serine 112 (H-S-SP-Y-P).

Specificity:

BAD (Ab-112) antibody detects endogenous levels of total BAD protein.

Tested Application: WB, IHC

Application Notes: Rabbit IgG in phosphate buffered saline (without Mg²⁺ and Ca²⁺), pH 7.4, 150mM NaCl, 0.02% sodium azide and 50% glycerol.

Raised In: Rabbit

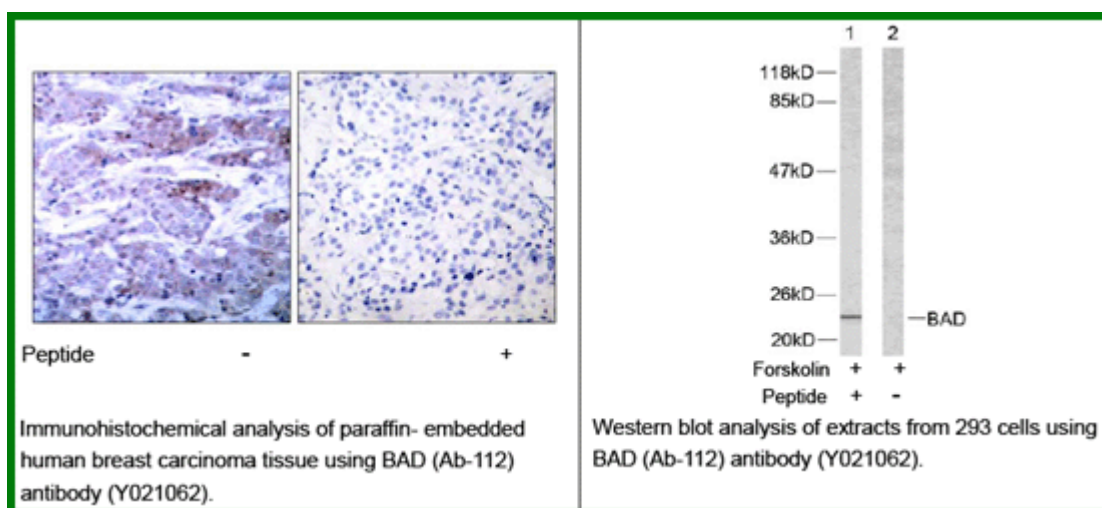
Purity: The antibody was affinity-purified from rabbit antiserum by affinity-chromatography using epitope-specific immunogen.

Storage buffer: WB: 1:500~1:1000 IHC: 1:50~1:100

Form: Liquid

Reference:

Zhang B, et al. (2004). Mol Cell Biol.24 (14): 6205-6214. Rice PL, et al. (2003). Cancer Res.63 (3): 616-620. Wang XQ, et al. (2001). J Biol Chem.276 (48): 44504-44511.



For research use only

Antagene, Inc. Toll Free: 1-866-964-2589, Fax: 1-888-225-1868, info@antageneinc.com,
www.antageneinc.com