



## **BCL-XL (Ab-62) Antibody**

**Cat. #:** ANTY021061

**Species:** Human, Mouse, Rat

**Quantity:** 100ug

**Concentration:** 100ug/100ul

**Storage and Stability:**

Store at -20°C/1 year

**Immunogen:**

This antiserum was produced against synthesized non-phosphopeptide derived from human BCL-XL around the phosphorylation site of serine 62 (A-D-SP-P-A).

**Specificity:**

BCL-XL (Ab-62) antibody detects endogenous levels of total BCL-XL protein.

**Tested Application:** WB

**Application Notes:** Rabbit IgG in phosphate buffered saline (without Mg<sup>2+</sup> and Ca<sup>2+</sup>), pH 7.4, 150mM NaCl, 0.02% sodium azide and 50% glycerol.

**Raised In:** Rabbit

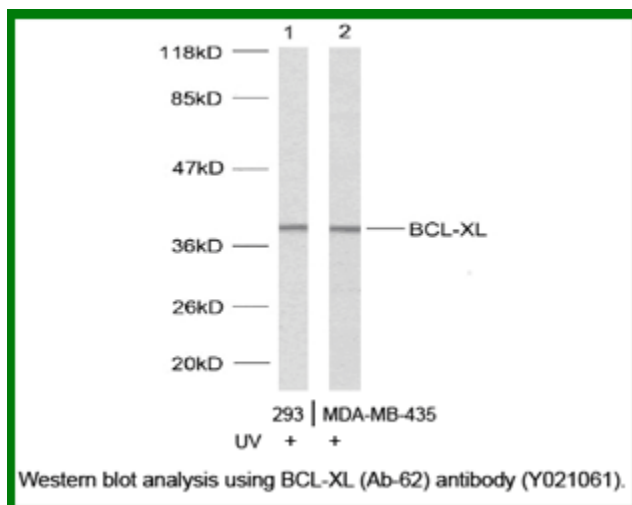
**Purity:** The antibody was affinity-purified from rabbit antiserum by affinity-chromatography using epitope-specific immunogen.

**Storage buffer:** WB: 1:500~1:1000

**Form:** Liquid

**Reference:**

Basu A, et.al.( 2003) Mar 13; 538(1-3): 41-7 Cheng E.H.-Y. et.al. (1996) Nature 379:554-556. Sattler M. et.al. (1997), Science 275:983-986. Muchmore S.W.et.al (1996).Nature 381:335-341 Yu J., Zhang L. Mol. (2001)Cell 7:673-682



**For research use only**

Antagene, Inc. Toll Free: 1-866-964-2589, Fax: 1-888-225-1868, [info@antageneinc.com](mailto:info@antageneinc.com),  
[www.antageneinc.com](http://www.antageneinc.com)